

# **F.10 v.3**

# **OPERATING MANUAL**

CONTENTS

NOTICES.....	2	FREE SET MODES.....	17
INITIAL ACTIVATION.....	3	SET ALARMS .....	17
FULL LCD.....	3	Set Audible Alarm.....	17
GENERAL FEATURES & DISPLAYS.....	5	Set SRT (Surface Recovery Time) Alarm.....	18
INTERACTIVE CONTROL CONSOLE.....	6	Set EDT (Elapsed Dive Time) Alarm.....	18
OPERATING MODE STRUCTURE.....	6	Set RDI (Repeating Depth Interval) Alarm.....	18
OPERATION AS A DIVING GAUGE.....	6	Set DD (Descending Depth) Alarms 1, 2, 3.....	19
PC/MAC INTERFACE.....	6	SET UTILITIES .....	19
GRAPHIC MESSAGES .....	6	Set Units .....	19
AUDIBLE ALARM.....	6	Set Wet Activation .....	19
BACKLIGHT .....	7	Set Water Type .....	20
POWER SUPPLY.....	7	Set Backlight Duration .....	20
WATCH MODE.....	8	Set DSD (Dive Start Depth) .....	20
DEFAULT TIME.....	9	Set BDSI (Between Dive Surface Interval).....	20
ALT DISPLAY.....	9	SERIAL NUMBER.....	20
CDT (COUNTDOWN TIMER) .....	9	CHRONOGRAPH (in FREE Surface Mode).....	20
Set CDT.....	10	LOG & HISTORY .....	21
DAILY ALARM .....	10	LOG MODE.....	21
Set Daily Alarm.....	10	HISTORY MODE.....	22
SET TIME & DATE.....	11	Day History.....	22
Set Date Format .....	11	Full History.....	23
Set Hour Format.....	11	FREE DIVE MODE.....	24
Set Time of Day.....	11	Backlight.....	25
Set Date .....	11	DIVE MAIN .....	25
Set Alternate Time (Hour Differential).....	12	DIVE ALT 1 (CDT STATUS).....	25
Select Default Time.....	12	DIVE ALT 2 .....	25
Set Show Dual Time .....	12	CHRONO STATUS.....	25
CHRONOGRAPH.....	13	WARNINGS & ALARMS.....	26
FREE SURFACE MODE.....	14	REFERENCE .....	28
SURF MAIN.....	15	UPLOADING SETTINGS & DOWNLOADING DATA.....	29
SURF ALT 1 (CDT STATUS) .....	16	PC Requirements.....	29
SURF ALT 2 .....	16	Mac Requirements.....	29
FREE CDT .....	16	CARE AND CLEANING.....	30
CDT Setup .....	16	INSPECTIONS AND SERVICE.....	30
		BATTERY REPLACEMENT.....	30
		ALTITUDE SENSING AND ADJUSTMENT.....	31
		SPECIFICATIONS.....	33
		GLOSSARY .....	34
		INSPECTION / SERVICE RECORD .....	35
		OCEANIC WORLD WIDE.....	35

NOTICES

LIMITED TWO YEAR WARRANTY

Visit the web site at [www.oceanicworldwide.com](http://www.oceanicworldwide.com) to find specific Warranty information and register.

COPYRIGHT NOTICE

This Operating Manual is copyrighted, all rights are reserved. It may not, in whole or in part, be copied, photocopied, reproduced, translated, or reduced to any electronic medium or machine readable form without prior consent in writing from Oceanic/2002 Design.

F.10 v.3 Operating Manual, Doc. No. 12-5380  
 © 2002 Design, 2014  
 San Leandro, CA USA 94577

TRADEMARK, TRADE NAME, AND SERVICE MARK NOTICE

Oceanic, the Oceanic logotype, F.10 v.3, the F.10 v.3 logo, Diver Replaceable Battery, Graphic Diver Interface, Set Point, Control Console, and OceanLog are all registered and unregistered trademarks, trade names, and service marks of Oceanic. All rights are reserved.

## INITIAL ACTIVATION

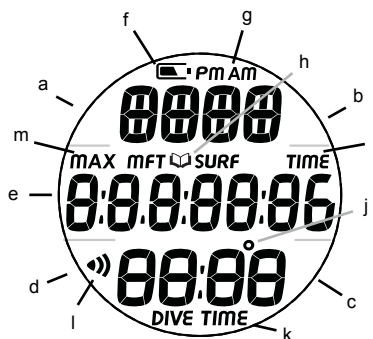
Oceanic Watch type dive gauges are placed in a Deep Sleep mode prior to being shipped from the factory. The intent is to extend storage life of the Battery for up to 7 years, before the unit is initially placed in service.

In this mode, Date and Time are updated as they normally would be. However, they are not displayed. Upon waking the F10v3 up, the correct Date and USA Pacific Time will be displayed and it will be ready to operate with full functions.

To wake the F10v3 up from Deep Sleep mode, simultaneously depress the upper/right (S) and lower/left (A) buttons for 2 seconds until the display comes full ON displaying the MAIN TIME screen, then release them.

**Once the F10v3 is brought out of the Deep Sleep mode, it can only be placed back in it by the factory.**

## FULL LCD



### Components:

- a. Mode (M) Button
- b. Select (S) Button
- c. Light (L) Button
- d. Advance (A) Button
- e. LED Warning Light
- f. Icon - Low Battery
- g. Icon - Time Am/Pm
- h. Icon - Log Mode
- i. Icon - Surface Interval Time
- j. Icon - Degrees (Temp)
- k. Icon - Elapsed Dive Time
- l. Icon - Daily Alarm set
- m. Icon - Depth/Max Depth

**Welcome**  
**to**  
**Oceanic**  
**and**  
**THANK YOU**  
**for choosing the**  
**F.10 v.3**

# **GENERAL**

# **FEATURES & DISPLAYS**

**INTERACTIVE CONTROL CONSOLE**

The Interactive Control Console consists of four Control Buttons that allow you to select mode options and access specific information. They are also used to enter Settings, operate the Backlight, and access additional screens of information.

Throughout this manual they will be referred to as the M, S, L, and A buttons.

- Upper/Left - Mode (M) button
- Upper/Right - Select (S) button
- Lower/Right - Light (L) button
- Lower/Left - Advance (A) button

**OPERATING MODE STRUCTURE**

Unless it is operating in Free Mode, the F10v3 will display Watch Time (Fig. 1) like a standard Watch until the mode is changed.

The A button is used to access other Watch functions that include an Alternate display, Countdown Timer, Chronograph (stop watch/run timer), Daily Alarm, and Time settings. The A button also allows direct access to Log and History Modes.

The M button is used to access and return from the Free Surface Main screen.

The screens of the various modes will be displayed until a button is pressed to access another screen or mode, activate a sequence, or for 2 minutes if no button is pressed. The Chronograph remains on display unless turned Off or another mode is accessed.

When operating in Free Mode, the F10v3 will enter Dive Mode upon descent to the DSD (Dive Start Depth) previously set which can be 2, 4, or 6 FT (feet) or 0.6, 1.2, or 1.8 M (meters) for 1 second. See page 20 for Set DSD.

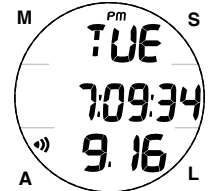


Fig. 1 - WATCH TIME

**OPERATION AS A DIVING GAUGE**

Entering Settings relating to diving activities is only available in Free Surface Mode which also allows access to a Countdown Timer (separate from the Watch CDT), Log, and History Modes.

**PC/MAC INTERFACE**

Interface with a PC or MAC, to allow uploading settings, downloading data, and updating firmware, is accomplished by connecting the F10v3 to a PC or Mac USB port using the special Oceanic USB interface cable.

The PC software program together with the PC USB driver required is on the Oceanic Product CD, or it can be downloaded from the Oceanic web site. The program's Help serves as the user manual which can be printed for personal use.

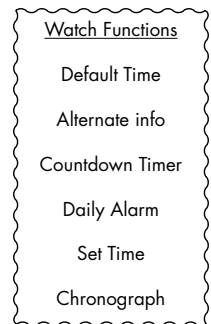
The DiverLog software program for MAC can be found at the Mac App Store.

The settings upload portion of the computer interface program can be used to set/change the Main Time, Date, Set Alarms group, and Set Utilities group using the same interface system.

Information available for retrieval (download) from the F10v3 to the download portion of the program includes dive number, surface interval time, start depth, end depth, maximum depth, elapsed dive time, start date, start time, lowest temperature under water, sampling rate, dive profile, and set points.

The computer interface program also allows update of select versions of the F10v3's firmware (operating system software).

- Refer to page 29 for more details relating to the computer interface system.



**GRAPHIC MESSAGES**

The segmented digits of the LCD are used to present various messages such as alarms, day of the week, modes, and items being set, as well as graphics such as On, Off, Set, Last, Log, Hist, etc.

**AUDIBLE ALARM**

A LED Warning Light, located on the side of the housing, is synchronized with the Audible Alarm. It will flash as the Audible Alarm sounds, then turn off when the Audible shuts off. The Audible and LED will not be active if the Alarm is set OFF, a group A setting which completely disables it.

When Alarms strike, the Backlight will come On if Off and remain On until you turn it Off by pressing/releasing the L button or it turns Off automatically after 10 seconds or the associated duration of beeps.

Situation that will sound (2) 2 second beeps -

- EDT (repeating Elapsed Dive Time) Alarm, if set On.

Situations that will sound 3 sets of (3) 1 second beeps -

- Watch Daily Alarm (surface only), if set On.
- Watch Countdown Timer reaches 0:00 (hr:min), if set On.
- Free Mode Countdown Timer reaches 0:00 (min:sec), if set On.
- SRT (Surface Recovery Time) Alert, if set On.
- RDI (Repeating Depth Interval) Alarm, if set On.

Situations that will sound 3 sets of (3) .125 second beeps -

- Depth Alarms DD1, DD2, and DD3, if set On.

**BACKLIGHT**

To turn the Backlight On, press and release the L button momentarily (< 2 seconds). The Backlight will remain On for the Duration time set (a Set U selection) unless you turn it Off during that time.

- The Backlight will come On (even if set OFF) when Alarms strike and remain On until turned Off or automatically after 10 seconds .
- Pressing and releasing the L button (< 2 seconds) while the Backlight is On will turn it Off.
- Depressing the L button for 2 seconds while the Backlight is On, will reset the timer and extend the On time to the full Duration time set.
- If the L button is held depressed for more than 60 seconds, the Backlight will turn Off and not turn On until the button is released then pressed/released again.
- The Backlight will be disabled when there is a Low Battery condition, and be re enabled once the battery is replaced.
- Extensive use of the Backlight reduces Battery use life.
- Turning the Backlight Off when it is not being used will help extend Battery use life.
- The Backlight does not operate when the unit is connected to a PC or Mac.

**POWER SUPPLY**

The F10v3 utilizes (1) 3 volt CR2430 Lithium Battery.

Battery voltage is checked every 2 minutes during operation while on the surface.

- If voltage decreases to the Warning level (2.75 volts), the Battery icon will appear on the Watch Main Time and Free Surface screens (Fig. 2a) as an indication that the Battery should be changed prior to commencing a series of dives.
- If voltage decreases to the Alarm level (2.50 volts), the Battery icon will flash and operation will automatically revert to Watch Main Time and only operate in Watch modes until the Battery becomes completely depleted.
- Low Battery Warning/Alarm conditions are not displayed during Dive Modes.
- If a Low Battery Condition was not displayed prior to starting a Dive, and a Low Battery Condition occurs during the dive, there will be sufficient Battery power to maintain operation for the remainder of that dive. Upon surfacing, the message CHNG >> BATT will alternate (Fig. 3), then operation will automatically revert to and remain in Watch Main Time until the Battery becomes completely depleted.



Fig. 2 - LOW BATTERY WARNING



Fig. 3 - LOW BATTERY ALARM

**Each display represents unique pieces of information. It is imperative that you understand the formats, ranges, and values of the information represented to avoid any possible misunderstanding that could result in error.**

**Understand which Time displays are represented as Minutes: Seconds and which are Hours:Minutes.**

**You must also understand the icons, symbols, and alpha/numeric messages presented.**

**The Informational Displays are described in detail as the various operating modes they appear in are presented throughout this manual.**

# **WATCH MODE**



**WATCH DEFAULT TIME**

Default Time is the time that is displayed on the Watch until changed. It is also the time viewed during operation in DC (Dive Computer) modes.

Main Time is the current time at your home location and is normally selected as the Watch Default Time.

Alternate Time will be the current time at a remote travel location. Upon arrival at the location, Alternate Time can be interchanged with Main Time to make it the Watch Default Time. When it is not selected to be the Default Time, it can be viewed on the Watch ALT screen, or it can be displayed on the Watch screen with Main Time and will be referred to as Dual Time

Once Alternate Time is set, by hour differential, it will automatically change when Time of Day is set/changed. When Alternate Time is selected to be the Watch Default Time (while at a travel location), it will change directly when Time of Day is changed and Main (home) Time will then change by a differential opposite the one set for Alternate Time.

**WATCH DEFAULT TIME**, information includes (Fig. 4A, 4B, 4C):

- > Battery icon, during Low Battery condition.
- > Day of the Week graphic (MON, TUE, etc.).
- > Time of Day (hr:min:sec) with AM (or PM) icon if 12 hour format; Main (home) or Alternate (away) with lazy 8 icon.
- > Date as Month.Day (or Day.Month); or Dual Time (hr:min) if Show Dual is set for Yes.
- > Alarm (speaker) icon, if the Daily Alarm is set On.

- A (< 2 sec) - to access the ALT screen and step forward through the group sequence.
- A (2 sec) - to access Log and History.
- M (2 sec) - to access FREE Surface Mode.
- M (< 2 sec) - to access the Chronograph and step back through the group sequence.
- S (< 2 sec) - to silence the Daily Alarm.
- L (< 2 sec) - to toggle the Backlight On/Off. *Will be On for the duration time set.*
- L (2 sec), while the Backlight is On, - to reset the timer to keep it On for the full duration time set.

**WATCH ALT** (Alternate), information includes (Fig. 5A or 5B):

- > Temperature with F (or C).
- > Time of Day (hr:min:sec) with AM (or PM) icon if 12 hour format; Main (home) or Alternate (away) with lazy 8 icon.; or the Date; whichever one is not on the Main.

- A (< 2 sec) - to step forward to the Watch CDT.
- M (< 2 sec) - to step back to Watch Main Time.
- Reverts to Watch Default Time in 10 seconds if A or M is not pressed.
- L (< 2 sec) - to toggle the Backlight On/Off. *Will be On for the duration time set.*
- L (2 sec), while the Backlight is On, - to reset the timer to keep it On for the full duration time set.

**WATCH CDT (Countdown Timer)**

*This selection provides access to a CDT for use in Watch mode.*

*Once set and started, it will continue to run in the background while on the surface in Watch Mode until it is turned Off or the time counts down to 0:00 at which time the alarm will strike and it will revert to Off.*

*Upon accessing FREE mode or starting a dive, Watch CDT operation will be terminated and the time reset to the previous setting.*

**CDT Lead-in**, information includes (Fig. 6):

- > Graphics Go To and Cdt.
- S (< 2 sec) - to access CDT Status.
- A (< 2 sec) - to step forward to Daily Alarm Lead-in.
- M (< 2 sec) - to step back to Watch ALT.
- M (2 sec), or 2 minutes of no button action, will revert to Watch Default Time.

**CDT Status**, information includes (Fig. 7A/B):

- > Graphic TIMR.
- > Countdown Time (hr:min) with TIME icon, as >>
  - 0:00 if no time has been set, or it completed the countdown;
  - hr:min set if Off and ready to start;
  - hr:min remaining of On with a countdown in progress.
- > Graphic OFF (or ON) flashing (Fig. 7A).



Fig. 4A - DEFAULT TIME (Main selected, no Dual)

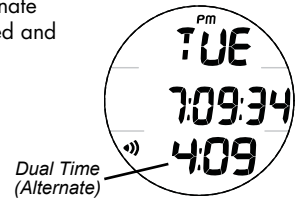


Fig. 4B - DEFAULT TIME (Main selected, with Dual)

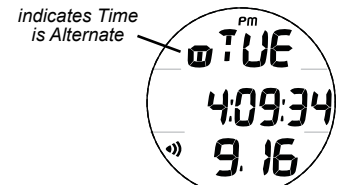


Fig. 4C - DEFAULT TIME (ALT selected, no Dual)



Fig. 5A - WATCH ALT (Show Dual set for No)

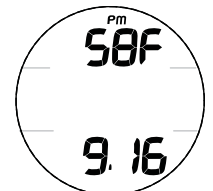


Fig. 5B - WATCH ALT (Show Dual set for Yes)

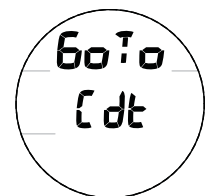


Fig. 6 - CDT LEAD-IN



Fig. 7A - CDT STATUS (upon access)

- A (< 2 sec) - to step forward through selections of OFF, ON, and SET (Fig. 7B).
- M (< 2 sec) - to step back through the selections.
- S (< 2 sec) - to save the selection.
  - >> If OFF or ON is selected, operation reverts to the Lead-in screen.
  - >> If SET is selected, the Set CDT screen is displayed.
- S (2 sec) - to revert to CDT Lead-in, if no setting change.
- M (2 sec), or 2 minutes of no button action, will revert to Watch Default Time.

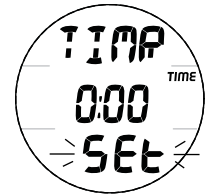


Fig. 7B - CDT STATUS (to access Set)

**Set CDT**, information includes (Fig. 8):

- > Graphics TIMR and SEt.
- > Timer setting (hr:min) with TIME icon, with Hour digits flashing.

- A (hold) - to scroll upward through Hour Set Points (8/sec) from 0: to 23: in increments of 1: (hr).
  - A (< 2 sec) - to step upward through Hour Set Points.
  - M (< 2 sec) - to step back through Set Points.
  - S (< 2 sec) - to save the Hour setting and flash the Minute digits.
  - A (hold) - to scroll upward through Minute Set Points (8/sec) from :00 to :59 in increments of :01 (min).
  - A (< 2 sec) - to step upward through Minute Set Points.
  - M (< 2 sec) - to step back through Set Points one at a time.
  - S (< 2 sec) - to save the CDT setting and revert to the CDT Status screen with SEt flashing, allowing ON or OFF to be selected as previously described.
- > ON will then start the countdown and revert to CDT Lead-in.  
 > OFF will save the setting and revert to CDT Lead-in.

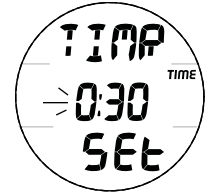


Fig. 8 - SET CDT (hr:min)

The CDT will run in the background until it counts down to 0:00, or it is set OFF, or FREE Mode is accessed or a dive is started in which case the countdown will terminate and revert to OFF.

When CDT reaches 0:00, the Audible will sound during which 0:00 with the CDT icon will flash on the Watch Default Time screen.

**DAILY ALARM**

When set On, the Daily Alarm will -

- > be synchronized with Watch Default Time.
- > sound the Audible every day at the Time set, while operating in Watch Mode.
- > not sound the Audible while operating in FREE Mode.
- > run in the background until set Off.

**Daily Alarm Lead-in**, information includes (Fig. 9):

- > Graphics Go To and dAY AL with icon.
- S (< 2 sec) - to access Daily Alarm Status.
- A (< 2 sec) - to step forward to Set Time Lead-in.
- M (< 2 sec) - to step back to CDT Lead-in.
- M (2 sec), or 2 minutes of no button action, will revert to Watch Default Time.

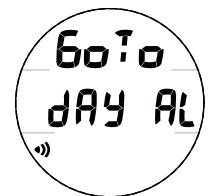


Fig. 9 - DAILY ALARM LEAD-IN

**Daily Alarm Status**, information includes (Fig. 10):

- > Graphic ALRM.
- > Alarm Time (hr:min) with TIME icon, and AM (or PM) icon if 12 Hour Format.
- > Graphic ON (or OFF) flashing, with Alarm icon.

- A (< 2 sec) - to step forward through the selections of OFF, ON, and SET.
- M (< 2 sec) - to step back through the selections.
- S (< 2 sec) - to save the selection, and -
  - > if OFF or ON is selected, revert to Daily Alarm Lead-in.
  - > if SET is selected, the Set screen is displayed.
- S (2 sec) - to revert to Daily Alarm Lead-in, if no setting change.
- M (2 sec), or 2 minutes of no button action, will revert to Watch Default Time.

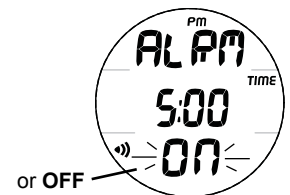


Fig. 10 - DAILY ALARM STATUS (set, ready)

**Set Daily Alarm**, information includes (Fig. 11):

- > Graphics ALRM and SEt Alarm icon.
- > Alarm Time (hr:min) with icons, Hour digits flashing.

- A (hold) - to scroll upward through Hour Set Points (8/sec) from 0: to 23: in increments of 1: (hr).
- A (< 2 sec) - to step upward through Hour Set Points.
- M (< 2 sec) - to step back through Set Points.
- S (< 2 sec) - to save the Hour setting and flash the Minute digits.
- A (hold) - to scroll upward through Minute Set Points (8/sec) from :00 to :59 in increments of :01 (min).
- A (< 2 sec) - to step upward through Minute Set Points.
- M (< 2 sec) - to step back through Set Points.
- S (< 2 sec) - to save the Alarm setting and revert to the Daily Alarm Status screen with SEt flashing, allowing ON or OFF to be selected as previously described.



Fig. 11 - SET DAILY ALARM (hr:min)

**SET TIME (& DATE)**

Sequence >> Lead-in >> Date Format >> Hour Format >> Time of Day >> Date >> Alternate Time >> Default Time >> Show Dual.

Set Points remain as set until changed.

**Set Time Lead-in**, information includes (Fig. 12):

- > Graphics GoTo and SET t.
- S (< 2 sec) - to access Set Date Format.
- A (< 2 sec) - to step forward to Chrono Lead-in.
- M (< 2 sec) - to step back to Daily Alarm Lead-in.
- M (2 sec), or 2 minutes of no button action, will revert to Watch Default Time.

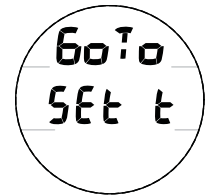


Fig. 12 - SET TIME LEAD-IN

**Set Date Format**, information includes (Fig. 13):

*Date Format establishes the position that the Month (M) digits are displayed relative to the Day (D) digits, on the left or right.*

- > Graphic M - D (or D - M) flashing.
- > Graphic dAtE.
- A or M (< 2 sec) - to toggle between M - D and D - M.
- S (< 2 sec) - to save setting and access Set Hour Format.
- S (2 sec) - to step back to Set Time Lead-in.
- M (2 sec), or 2 minutes of no button action, will revert to Watch Default Time.

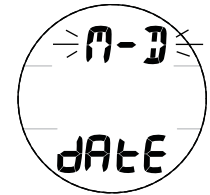


Fig. 13 - SET DATE FORMAT

**Set Hour Format**, information includes (Fig. 14):

*Hour Format establishes the number of hours displayed for Time of Day, 1 to 12 (AM and PM) or 1 to 24.*

- > Graphic HOUR with TIME icon.
- > Graphic 12 (or 24) flashing.
- A or M (< 2 sec) - to toggle between 12 and 24.
- S (< 2 sec) - to save setting and access Set Time of Day.
- S (2 sec) - to step back to Set Date Format.
- M (2 sec), or 2 minutes of no button action, will revert to Watch Default Time.



Fig. 14 - SET HOUR FORMAT

**Set Time of Day**, information includes (Fig. 15):

*This setting changes Time of Day selected as the Default Time (Main or Alternate), which also changes other by the differential set.*

- > Graphic 12HR (or 24HR) with TIME icon.
- > Time of Day (hr:min), Hour digits flashing, with AM (or PM) icon if 12 Hour format.
- A (hold) - to scroll upward through Hour Set Points (8/sec) from 12: AM to 11: PM, or 0: to 23: if 24 Hour Format, in increments of 1: (hr).
- A (< 2 sec) - to step upward through Hour Set Points.
- M (< 2 sec) - to step back through Set Points.
- S (< 2 sec) - to save the Hour setting and flash the Minute digits.
- S (2 sec) - to step back to Set Hour Format.
- A (hold) - to scroll upward through Minute Set Points (8/sec) from :00 to :59 in increments of :01 (min).
- A (< 2 sec) - to step upward through Minute Set Points.
- M (< 2 sec) - to step back through Set Points.
- S (< 2 sec) - to save the Time setting and access Set Date.
- S (2 sec) - to step back to Set Hour.
- M (2 sec), or 2 minutes of no button action, will revert to Watch Main Time.



Fig. 15 - SET TIME OF DAY (hr:min)

Watch Time/Date can also be set using the Settings Upload feature of the PC Interface software.

Prior to shipment from the factory, any error of the Watch Time is determined and corrected.

**Set Date**, information includes (Fig. 16):

*Sequence is Set Year, then Set Month, then Set Day, regardless of Date Format set (their location on the screen).*

- > Graphic YEAR.
- > Year digits, flashing upon access.
- > Month.Day (or Day.Month).
- A (hold) - to scroll upward through Year Set Points (8/sec) from 2013 to 2056, in increments of 1.
- A (< 2 sec) - to step upward through Year Set Points.
- M (< 2 sec) - to step back through Set Points.
- S (< 2 sec) - to save the Year setting, replace the graphic YEAR with MNTH, and flash the Month digits.
- S (2 sec) - to step back to Set Time of Day.



Fig. 16 - SET DATE (Year, Month, Day)

- A (hold) - to scroll upward through Month Set Points (8/sec) from 1 to 12 in increments of 1.
- A (< 2 sec) - to step upward through Set Points.
- M (< 2 sec) - to step back through Set Points.
- S (< 2 sec) - to save the Month Set Point, replace the graphic MNTH with DAY, and flash the Day digits.
- S (2 sec) - to step back to Set Year.
  
- A (hold) - to scroll upward through Day Set Points (8/sec) from 1 to 31 (max for that month) in increments of 1.
- A (< 2 sec) - to step upward through Set Points.
- M (< 2 sec) - to step back through Set Points.
- S (< 2 sec) - to save the Date setting and revert to Set Time Lead-in.
- S (2 sec) - to step back to Set Month.
- M (2 sec), or 2 minutes of no button action, will revert to Watch Default Time.

**Set Alternate Time (Differential)**, information includes (Fig. 17):

*This feature allows you to set an Hour based numeric time Differential ranging from - 23 through OFF to + 23 (hours). It provides a second (Alternate) Time equal to Watch Default Time +/- the Hours selected.*

- > Graphic OFF, or the Hour Differential (+ or - sign with numeric digits), flashing.
- > Graphics diFF - Hr and ALT with TIME icon.
  
- A (hold) - to scroll upward through the Set Points (8/sec) from OFF to + 01 through + 23 then - 23 through - 01 in increments of 1 (hour).
- A (< 2 sec) - to step upward through Set Points.
- M (< 2 sec) - to step back through Set Points.
- S (< 2 sec) - to save the setting and access Select Default Time.
- S (2 sec) - to step back to Set Time of Day.
- M (2 sec), or 2 minutes of no button action, will revert to Watch Default Time.

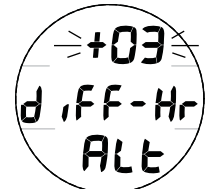


Fig. 17 - SET ALT TIME (Hour Differential)

**Select Default Time**, information includes (Fig. 18):

*This selection allows you to choose which time is to be displayed as the primary time of day, and which by differential.*

- > Graphic MAIN (home) or ALT (away), the one previously saved, flashing.
- > Graphic dEFAULT with TIME icon.
  
- A or M (< 2 sec) - to toggle between MAIN and ALT.
- S (< 2 sec) - to save the setting and access Show Dual Time.
- S (2 sec) - to step back to Set Alternate Time.
- M (2 sec), or 2 minutes of no button action, will revert to Watch Default Time.

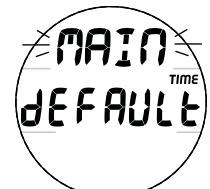


Fig. 18 - SELECT DEFAULT TIME

**Show Dual Time**, information includes (Fig. 19):

*This selection determines whether the differential time set will be displayed on the main Watch screen with Default Time.*

- > Graphic SHOW and dUAL with TIME icon.
- > Graphic YES or NO, the one previously saved, flashing.
  
- A or M (< 2 sec) - to toggle between YES and NO.
- S (< 2 sec) - to save the setting and revert to the Set Time Lead-in (Go To) screen.
- S (2 sec) - to step back to Set Default Time.
- M (2 sec), or 2 minutes of no button action, will revert to Watch Default Time.



Fig. 19 - SET SHOW DUAL TIME

**CHRONOGRAPH** (Stop Watch, Lap/Run Timer)

The Chrono is operational during all modes (Watch, Free Surface, and Dive). Once started, the Chrono remains on the display and continues to run until M is pressed (< 2 sec) to revert to the Lead-in (Go To) screen if in Watch or FREE Surface mode or to the Dive Main if a dive was started while the Chrono was running. It runs unseen in the background when being displayed.

**Chrono Lead-in**, information includes (Fig. 20A):

> Graphics GoTo and Chro.

- S (< 2 sec) - to access Chrono Status.
- A (< 2 sec) - to step forward to Watch Main Time (or Surface Main if in FREE Mode).
- M (< 2 sec) - to step back to Set Time Lead-in (or ID-SN if in FREE Mode).
- M (2 sec), or 2 minutes of no button action, will revert to Watch Default Time.
- L (< 2 sec) - to toggle the Backlight On/Off. Will be On for the duration time set.
- L (2 sec), while the Backlight is On, - to reset the timer to keep it On for the full duration time set.



Fig. 20A - CHRONO LEAD-IN



Fig. 20B - CHRONO STATUS (just started)

**Chrono Status**, information includes (Fig. 20B, 20C):

> Graphic CHRO.

> Elapsed run time with TIME icon >> 0:00.00 flashing if not yet started or after reset; or counting up to 9:59:59.99 (min:sec\_.01 sec) if previously started. After the first 4.99 seconds, the .01 digits display 2 dashes ( . - - ).

> Graphic LAP1 (up to 9) once started, blank if not.

- S\* (< 2 sec) - to start the Timer which begins counting up in increments of .01 sec.
- S\* (< 2 sec) - to save that Lap's time and display the next Lap # (up to 9, then restart with 1) with the Timer continuing to count up, displaying total run time until stopped.
- A (< 2 sec) - to stop the Timer, save the Lap in progress (the final Lap) and total elapsed run time\*, then recall LAP1 (up to 9) flashing with it's time (Fig. 20D). Repeat to recall other Lap times.

\*Total elapsed run time is the entire time from S (< 2 sec) that first started Lap 1 until A (< 2 sec) that stopped the timer and final lap.

- A (2 sec) after the timer is stopped - to reset total run time to 0:00.00.
- S\* (2 sec) - to step back to the Chrono Lead-in.
- L (< 2 sec) - to toggle the Backlight On/Off. Will be On for the duration time set.
- L (2 sec), while the Backlight is On, - to reset the timer to keep it On for the full duration time set.

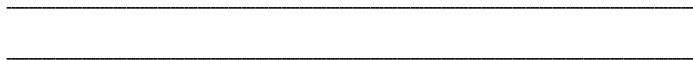
\*Chrono operations are blocked when S is operated during an alarm strike.



Fig. 20C - CHRONO STATUS (running)



Fig. 20D - CHRONO LAP RECALL



**If no dive is conducted within 2 hours after accessing Free Mode, operation will revert to Watch Default Time.**

**Operation will also revert from Free Surface Mode to Watch Default Time 2 hours after completion of a dive or if M is pressed (for 2 seconds) while viewing Free Surface Main.**

# **SURFACE MODE**

**SURFACE MODE**

Surface Main is the default screen displayed while in FREE Mode.

Like Watch mode, you can access a group of functions including >>

ALTs (Countdown Timer and additional data), Set Alarms, Set Utilities, Serial Number, and Chronograph.

The CDT is separate from the one featured in Watch Mode.

The Chronograph is the same one as Watch Mode with it's operations carrying over between the two modes.

Group button operations >>

- A (< 2 sec) - to step forward through the sequence of selections in the group.
- M (< 2 sec) - to step back through selections.
- M (2 sec, any time) - to revert to Surface Main.
- No button action (2 min) - revert to Surface Main.
- L - to activate the Backlight.

Descent to the DSD (Dive Start Depth) set for 1 second will activate Dive Mode, which will run in the background if the Chrono is on display. *Setting the DSD for the start depth you prefer is explained later in the Set Utilities section.*

Upon ascent to 2 FT (0.6 M) for 1 second, the Dive Main will remain on display for 10 minutes or until M is pressed (2 sec), whichever is first, then the Surface Main will be displayed.

When set On, the SRT (Surface Recovery Time) alarm will sound and flash a message when the Surface Interval after surfacing reaches the time set. *Setting the SRT Alarm for the interval that you prefer is explained later in the Set Alarms section.*

When 2 hours elapse after surfacing, operation will revert to Watch Mode. M (2 sec) will access or return from Watch Mode.

**SURF MAIN**, information includes (Fig. 21A/B/C):

- > Graphic FREE.
- > Surface Interval Time (hr:min:sec) with SURF and TIME icons.
- > Number of the last dive conducted that calendar day with DIVE icon. If no dive has been made yet that day, or if Dive # is reset by A+S (2 sec), 0 will be displayed.
- > Battery icon, if a Low Battery condition.

- A (< 2 sec) - to access SURF ALT 1, and step forward through the group sequence.
- A (2 sec) - to access Log/History.
- A + S (2 sec) - to reset Dive # to 0.
- M (< 2 sec) - to access Chrono Lead-in, and step back through the group sequence.
- M (2 sec) - to access Watch Main.
- L (< 2 sec) - to toggle the Backlight On/Off. *Will be On for the duration time set.*
- L (2 sec), while the Backlight is On, - to reset the timer to keep it On for the full duration time set.



Fig. 21A - SURF MAIN (no dive yet)

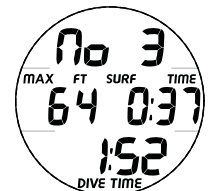


Fig. 21B - SURF MAIN (< 10 min after surfacing)



Fig. 21C - SURF MAIN (> 10 min after surfacing)

Upon surfacing from a dive, the following information is displayed for 10 minutes or until M is pressed for 2 seconds (whichever is first), then the above is displayed.

- > Graphic No and # of that dive.
- > Max Depth of the dive with MAX and FT (or M) icons.
- > Current Surface Interval Time\*\* (min:sec) with SURF and TIME icons.
- > EDT with DIVE and TIME icons.

*\*\*Note that Surface Interval Time is displayed as hr:min:sec, except during the first 10 minutes after surfacing from a dive when only min:sec are displayed.*

While this information is displayed, A and S button operations are blocked.

**SURF ALT 1 (CDT Status)**, information includes (Fig. 22):

- > Graphic TIMR.
  - > Countdown Time (min:sec) with TIME icon, as >>
    - 0:00 if no time has been set, or it completed the countdown;
    - min:sec set if Off (or Auto) and ready to start;
    - min:sec remaining if On (or Auto) with a countdown in progress.
  - > Graphic OFF (or ON, or Auto) flashing.
- S (< 2 sec) - to start/stop the countdown. *Once started when set for Auto, the countdown repeats until stopped.*
  - S (2 sec), when set On for Auto and while the countdown is stopped - to reset the time to the min:sec previously set.
  - A (< 2 sec) - to step forward to ALT 2.
  - M (< 2 sec) - to step back to SURF MAIN.
  - Reverts to Main in 30 seconds if A or M is not pressed.
  - L (< 2 sec) - to toggle the Backlight On/Off. *Will be On for the duration time set.*
  - L (2 sec), while the Backlight is On, - to reset the timer to keep it On for the full duration time set.



Fig. 22 - SURF ALT 1

**SURF ALT 2**, information includes (Fig. 23):

- > Day of Week graphic.
  - > Time of Day (hr:min:sec) with AM (or PM) and TIME icons.
  - > Temperature with °F (or °C).
- A (< 2 sec) - to step forward to CDT Lead-in.
  - M (< 2 sec) - to step back to ALT 1.
  - Reverts to Main in 10 seconds if A or M is not pressed.
  - L (< 2 sec) - to toggle the Backlight On/Off. *Will be On for the duration time set.*
  - L (2 sec), while the Backlight is On, - to reset the timer to keep it On for the full duration time set.



Fig. 23 - SURF ALT 2

**FREE CDT (COUNTDOWN TIMER)**

The FREE Mode CDT (which is not the same one as the Watch CDT) counts down time values in minutes:seconds.

CDT Status, displayed as SURF ALT 1 will be displayed as Dive ALT 1 once a dive is started.

When set for Auto, the countdown will keep repeating after counting down to 0:00 until stopped by S (< 2 sec) while viewing SURF or Dive ALT 1.

**CDT Lead-in**, information includes (Fig. 24):

- > Graphics GoTo and Cdt.
- S (< 2 sec) - to access CDT Setup.
  - A (< 2 sec) - to step forward to Set Alarms Lead-in.
  - M (< 2 sec) - to step back to SURF ALT 2.
  - M (2 sec), or 2 minutes of no button action, will revert to SURF MAIN.
  - L (< 2 sec) - to toggle the Backlight On/Off. *Will be On for the duration time set.*
  - L (2 sec), while the Backlight is On, - to reset the timer to keep it On for the full duration time set.

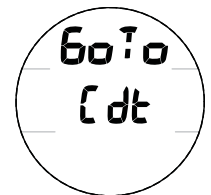


Fig. 24 - CDT LEAD-IN

**CDT Setup**, information includes (Fig. 25):

- > Graphic TIMR.
  - > Countdown Time (min:sec) as >>
    - 0:00 if no time has been set, or it completed the countdown;
    - min:sec set if Off (or Auto) and ready to start;
    - min:sec remaining if On (or Auto) with a countdown in progress.
  - > Graphic OFF (or ON, or Auto) flashing.
- A (< 2 sec) - to step forward through selections of OFF, ON, AUTO, and SET.
  - M (< 2 sec) - to step back through the selections.
  - S (< 2 sec) - to save the selection.
    - >> If OFF, ON\*, or AUTO\* is selected, operation reverts to the Lead-in screen.
    - \*Selecting ON or AUTO does not start the timer. It is only started/stopped when displayed as Surface or Dive ALT 1.
    - >> If SET is selected, the Set CDT screen is displayed.
  - S (2 sec) - to revert to CDT Lead-in, if no setting change.
  - M (2 sec), or 2 minutes of no button action, will revert to SURF MAIN.
  - L (< 2 sec) - to toggle the Backlight On/Off. *Will be On for the duration time set.*
  - L (2 sec), while the Backlight is On, - to reset the timer to keep it On for the full duration time set.

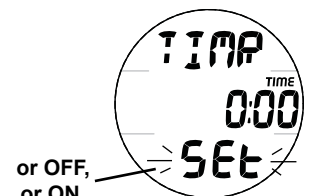


Fig. 25 - CDT SETUP (to access Set)

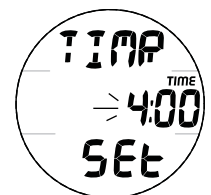


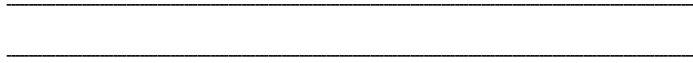
Fig. 26 - SET CDT

**Set CDT**, information includes (Fig. 26):

- > Graphics TIMR and SET.
- > Timer setting (min:sec) with TIME icon, with Minute digits flashing.



- A (hold) - to scroll upward through Minute Set Points (8/sec) from 0: to 59: in increments of 1: (min).
- A (< 2 sec) - to step upward through Minute Set Points.
- M (< 2 sec) - to step back through Set Points.
- S (< 2 sec) - to save the Minute setting and flash the Seconds digits.
- A (hold) - to scroll upward through Seconds Set Points (8/sec) from :00 to :59 in increments of :01 (sec).
- A (< 2 sec) - to step upward through Seconds Set Points.
- M (< 2 sec) - to step back through Set Points one at a time.
- S (< 2 sec) - to save the CDT setting and revert to the CDT Status screen with SET flashing, allowing ON or OFF to be selected as previously described.
- S (2 sec) - to revert to CDT Setup, if no setting change.
- M (2 sec), or 2 minutes of no button action, will revert to SURF MAIN.
- L (< 2 sec) - to toggle the Backlight On/Off. *Will be On for the duration time set.*
- L (2 sec), while the Backlight is On, - to reset the timer to keep it On for the full duration time set.



**SURFACE SET MODES**

To access: SURF MAIN >> ALT 1 >> ALT 2 >> CDT >> SET A >> SET U.

- A (< 2 sec) to access and step through the sequence.
- > Set Points can also be changed using the ACI PC Interface program.
- > Settings remain at the values set until changed.

**SET ALARMS**

Sequence: Lead-in >> AUD >> SRT >> EDT >> RDI >> DD1 to DD3.

- A (< 2 sec), while viewing CDT Lead-in, to access Set Alarms Lead-in.

*The Set Audible feature provides complete OFF control of the Audible and its associated LED warning light. When set OFF, no beeps will be emitted and the light will not flash when an alarm condition occurs, which some divers prefer during select activities. Icons and messages will still flash and the Backlight will still come On.*

*The SRT (Surface Recovery Time) Alarm provides an alert when a set 'recovery time' has elapsed after surfacing from a dive.*

*The EDT (repeating Elapsed Dive Time) Alarm repeats each time the Time Interval set is reached during operation in Dive Mode.*

*The RDI (Repeating Depth Interval) Alarm repeats each time the Depth Interval set is reached, except when the DD alarms strike. If a series of descents, ascents, descents is made, the alarm will activate during each of the Descents.*

*The DD1 to DD3 (Descending Depth) Alarms are set and operate in sequence while descending.*

At any time while entering settings -

- M (2 sec), or 2 minutes of no button action, will revert to SURF MAIN.
- L (< 2 sec) - to toggle the Backlight On/Off. *Will be On for the duration time set.*
- L (2 sec), while the Backlight is On, - to reset the timer to keep it On for the full duration time set.

**Set Alarms Lead-in**, information includes (Fig. 27):

> Graphics GoTo and SET A.

- S (< 2 sec) - to access Set Audible.
- A (< 2 sec) - to step forward to Set Utilities Lead-in.
- M (< 2 sec) - to step back to CDT Lead-in.

**Set Audible Alarm**, information includes (Fig. 28):

> Graphic AUD.  
> Graphic OFF (or ON), flashing upon access.

- A or M (< 2 sec) - to toggle between OFF and ON.
- S (2 sec) - to step back to Set Alarms Lead-in.
- S (< 2 sec) - to save the setting and access Set SRT Alarm.

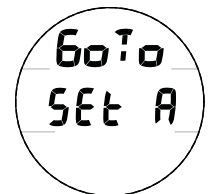


Fig. 27 - SET ALARMS LEAD-IN

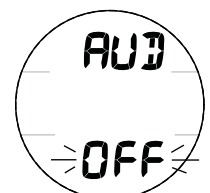


Fig. 28 - SET AUDIBLE ALARM

**Set SRT (Surface Recovery Time) Alarm**, information includes (Fig. 29):

- > Graphic SRT.
- > Recovery Time (min:sec) with SURF & TIME icons.
- > Graphic OFF (or ON), flashing upon access.
- A (< 2 sec) - to step forward through the selections of OFF, ON, and SET.
- M (< 2 sec) - to step back through the selections.
- S (2 sec) - to step back to Set Audible.
- S (< 2 sec) - to save the setting.



Fig. 29 - SET SRT ALARM

- > If OFF or ON is saved, operation will advance to Set EDT Alarm.
- > If SET is saved, the Minute digits will flash.

- A (hold) - to scroll upward through the Minute Set Points at a rate of 8 per second from 0: to 30: in increments of 1 minute.
- A (< 2 sec) - to step upward through the Minute Set Points one at a time.
- M (< 2 sec) - to step back through the Minute Set Points one at a time.
- S (2 sec) - to step back to SET flashing.
- S (< 2 sec) - to save the Minute setting and flash the Seconds digits.
- A (hold) - to scroll upward through the Second Set Points at a rate of 8 per second from :00 to :59 in increments of 1 second.
- A (< 2 sec) - to step upward through the Second Set Points one at a time.
- M (< 2 sec) - to step back through the Second Set Points one at a time.
- S (2 sec) - to step back to the Minutes digits flashing.
- S (< 2 sec) - to save the min:sec setting (digits solid) and flash the graphic SET allowing ON or OFF to be selected/saved.

**Set EDT (repeating Elapsed Dive Time) Alarm**, information includes (Fig. 30):

- > Graphic EDT.
- > Time (min:sec) with TIME icon.
- > Graphic OFF (or ON), flashing upon access.
- A (< 2 sec) - to step forward through the selections of OFF, ON, and SET.
- M (< 2 sec) - to step back through the selections.
- S (2 sec) - to step back to Set SRT Alarm.
- S (< 2 sec) - to save the setting.



Fig. 30 - SET EDT ALARM

- > If OFF or ON is saved, operation will advance to Set RDI Alarm.
- > If SET is saved, the Minutes digits will flash.

- A (< 2 sec) - to step upward through the Minute Set Points one at a time from 0: to 9: in increments of 1 minute.
- M (< 2 sec) - to step back through the Minute Set Points one at a time.
- S (2 sec) - to step back to SET flashing.
- S (< 2 sec) - to save the Minute setting and flash the Seconds digits.
- A (hold) - to scroll upward through the Second Set Points at a rate of 8 per second from :00\* to :59 in increments of 1 second.

\*Starts at :10 (10 seconds minimum) when Minutes are set for 0.

- A (< 2 sec) - to step upward through the Second Set Points one at a time.
- M (< 2 sec) - to step back through the Second Set Points one at a time.
- S (2 sec) - to step back to the Minutes digits flashing.
- S (< 2 sec) - to save the min:sec setting (digits solid) and flash the graphic SET allowing ON or OFF to be selected/saved.

**Set RDI (Repeating Depth Interval) Alarm**, information includes (Fig. 31):

- > Graphic RDI.
- > Depth interval with FT (or M) icon.
- > Graphic OFF (or ON), flashing upon access.
- A (< 2 sec) - to step forward through the selections of OFF, ON, and SET.
- M (< 2 sec) - to step back through the selections.
- S (2 sec) - to step back to Set EDT Alarm.
- S (< 2 sec) - to save the setting.



Fig. 31 - SET RDI ALARM

- > If OFF or ON is saved, operation will advance to Set DD1 Alarm.
- > If SET is saved, the Depth digits will flash.

- A (hold) - to scroll upward through the Depth Set Points at a rate of 8 per second from 10 to 100 FT (3 to 33 M) in increments of 1 FT (3 M).
- A (< 2 sec) - to step upward through the Set Points one at a time.
- M (< 2 sec) - to step back through the Set Points one at a time.
- S (2 sec) - to step back to SET flashing.
- S (< 2 sec) - to save the setting (digits solid) and flash the graphic SET allowing ON or OFF to be selected/saved.

**Set DD1 (Descending Depth Alarm, DD2 & DA3 similar)**, information includes (Fig. 32):

The Depth Alarms can only be set at progressively deeper depths with DD2 deeper than DD1 and DD3 deeper than DD2, then any of the alarms can be set OFF or ON as needed.

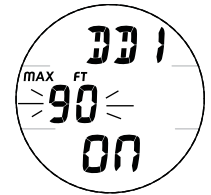


Fig. 32 - SET DD ALARM

- > Graphic DD1.
  - > Depth with MAX and FT (or M) icons.
  - > Set Point OFF (or ON), flashing upon access.
- A (< 2 sec) - to step forward through the selections of OFF, ON, and SET.
  - M (< 2 sec) - to step back through the selections.
  - S (2 sec) - to step back to Set RDI Alarm.
  - S (< 2 sec) - to save the setting.
- > If OFF or ON is saved, operation will advance to Set DD2 Alarm (to Set DD3 when setting DD2, then to the Set Alarms Lead-in when setting DD3).
  - > If SET is saved, the Depth digits will flash.
- A (hold) - to scroll upward through the Depth Set Points at a rate of 8 per second from 10 to 330 FT (3 to 100 M) in increments of 1 FT (1 M).
  - A (< 2 sec) - to step upward through the Set Points one at a time.
  - M (< 2 sec) - to step back through the Set Points one at a time.
  - S (2 sec) - to step back to SET flashing.
  - S (< 2 sec) - to save the Depth setting (digits solid) and flash the graphic SET allowing ON or OFF to be selected/saved.

**SET UTILITIES**

Sequence: Lead-in >> Units >> Wet Activation >> Water Type >> Backlight Duration >> DSD >> BDSI.

- A (< 2 sec), while viewing Set Alarms Lead-in, to access Set Utilities Lead-in.

The Wet Activation feature allows you to turn the disable activation of Dive Mode during activities when you may be using Watch features not involved with diving.

The Water Type selection adjusts Depth calibration to accommodate activities in fresh or sea/salt water.

The Backlight Duration determines how long the Backlight will be On when activated by pressing the L button.

The DSD (Dive Start Depth) feature allows you to select the Depth at which Dive Mode will be activated upon descent. Regardless of the DSD set, every dive ends upon ascent above 2 FT (0.6 M) for the BDSI set.

The BDSI (Between Dive Surface Interval) feature allows you to select the time interval between surfacing and descending that determines whether the descent is a new dive. Short intervals may be preferred for some activities and longer intervals for others, thus a selection may be helpful.

At any time while entering settings -

- M (2 sec), or 2 minutes of no button action, will revert to SURF MAIN.
- L (< 2 sec) - to toggle the Backlight On/Off. Will be On for the duration time set.
- L (2 sec), while the Backlight is On, - to reset the timer to keep it On for the full duration time set.

**Set Utilities Lead-in**, information includes (Fig. 33):

- > Graphics GoTo SET U.

- S (< 2 sec) - to access Set Audible.
- A (< 2 sec) - to step forward to ID-SN.
- M (< 2 sec) - to step back to Set Alarms Lead-in.

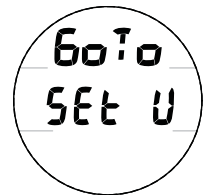


Fig. 33 - SET UTILITIES LEAD-IN

**Set Units**, information includes (Fig. 34):

- > Graphic UNIT.
- > FT icon and °F (or M and °C), flashing.

- A or M (< 2 sec) - to toggle between Imperial and Metric.
- S (2 sec) - to step back to Set Utilities Lead-in.
- S (< 2 sec) - to save the setting and access Set Wet Activation.



Fig. 34 - SET UNITS

**Set Wet Activation**, information includes (Fig. 35):

- > Graphics WET ACT.
- > Graphic OFF (or ON), flashing.

- A or M (< 2 sec) - to toggle between OFF and ON.
- S (2 sec) - to step back to Set Units.
- S (< 2 sec) - to save the setting and access Set Water Type.



Fig. 35 - SET WET ACTIVATION

**Set Water Type**, information includes (Fig. 36):

- > Graphics TYPE and H2O.
- > Graphic SEA (or FrESH), flashing upon access.
- A (< 2 sec) - to toggle between SEA and FRESH.
- S (2 sec) - to step back to Set Wet Activation.
- S (< 2 sec) - to save the setting and access Set Backlight Duration.



Fig. 36 - SET WATER TYPE

**Set Backlight Duration**, information includes (Fig. 37):

- > Graphics GLO and durA.
- > Time (min:sec) flashing upon access, with TIME icon.
- A (< 2 sec) to step upward through Set Points of 0:05, 0:10, 0:30, 1:00 (min:sec) one at a time.
- M (< 2 sec) to step back through the Set Points one at a time.
- S (2 sec) - to step back to Set Water Type.
- S (< 2 sec) to save the setting and access Set DSD.



Fig. 37 - SET BACKLIGHT DURATION

**Set DSD (Dive Start Depth)**, information includes (Fig. 38):

- > Graphic DSD.
- > Depth flashing upon access, with FT (or M) icon.
- A (< 2 sec) to step upward through the Set Points of 2, 4, 6 FT (0.6, 1.2, 1.8 M) one at a time.
- M (< 2 sec) to step back through Set Points one at a time.
- S (2 sec) - to step back to Set Backlight Duration.
- S (< 2 sec) to save the setting and access Set BDSI.



Fig. 38 - SET DSD

**Set BDSI (Between Dive Surface Interval)**, information includes (Fig. 39):

- > Graphic BDSI.
- > Time (min:sec) flashing upon access, with SURF and TIME icon.
- A (hold) to scroll upward through the Set Points 8 per second from 0:01 to 1:00 (min:sec) in increments of :01 (1 sec).
- A (< 2 sec) to step upward through the Set Points one at a time.
- M (< 2 sec) to step back through the Set Points one at a time.
- S (2 sec) - to step back to Set DSD.
- S (< 2 sec) to save the setting and revert to Set Utilities Lead-in.

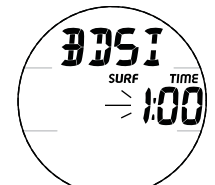


Fig. 39 - SET BDSI

**SERIAL NUMBER (SN)**

- A (< 2 sec), while viewing Set Utilities Lead-in, - to access the Serial Number screen.

Information includes (Fig. 40):

- > Graphic SN.
- > Factory programmed Serial Number (up to 6 digits).
- > Firmware (operating software) revision number (e.g., graphic r1A).
- A (< 2 sec) - to step forward to Chrono Lead-in.
- M (< 2 sec) - to step back to Set Utilities Lead-in
- M (2 sec), or 2 minutes of no button action, will revert to SURF MAIN.
- L (< 2 sec) - to toggle the Backlight On/Off. *Will be On for the duration time set.*
- L (2 sec), while the Backlight is On, - to reset the timer to keep it On for the full duration time set.

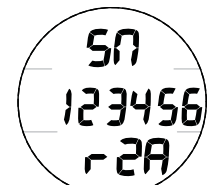


Fig. 40 - SN

***This information will be required if a unit is sent to Oceanic for evaluation or service. Record it in the table provided in the back of this manual, and retain the sales receipt.***

**CHRONOGRAPH**

The Chrono in FREE Mode is the same one used in Watch Mode and it carries over between modes when it is in operation.

Refer to Watch Mode (page 12) for operation and displays.

**Chrono Lead-in**, information includes (Fig. 41):

- > Graphics GoTo Chro.
- S (< 2 sec) - to access Chrono Status.
- A (< 2 sec) - to step forward to SURF MAIN.
- M (< 2 sec) - to step back to SN.
- M (2 sec), or 2 minutes of no button action, will revert to SURF MAIN.
- L (< 2 sec) - to toggle the Backlight On/Off. *Will be On for the duration time set.*
- L (2 sec), while the Backlight is On, - to reset the timer to keep it On for the full duration time set.



Fig. 41 - CHRONO LEAD-IN

## LOG & HISTORY

- A (2 sec), while Watch Main Time or FREE SURF Main is displayed, will access and step through Log and History modes.

Sequence: Main >> Log >> Day History >> Full History.

### LOG MODE

Log Mode displays information from the latest 99 dives sequentially in reverse order (the most recent first).

Log information is retained until over written by another dive.

After exceeding 99 dives, the most recent Dive completed will be added to the Log and the oldest deleted.

Battery removal will not affect the Log data stored for viewing.

Dives will be numbered 1 to 99 starting at # 1 each new calendar day, or period of activity. After midnight, the first dive of the next day will be # 1. It will also be # 1 if you reset the Dive # to 0 by pressing S (2 sec) while viewing the SURF MAIN.

Upon entering Log Mode, the most recent dive's Log 1 screen will be displayed.

### LOG 1, information includes (Fig. 42):

- > Graphic No with the dive number (1 to 99) for that day, or period of activity.
- > Max Depth with MAX and FT (or M) icons.
- > Log (book) icon.
- > Pre Dive SI (min:sec, hr:min if > 59:59) with SURF and TIME icons, blank if Dive # 1.
- > Elapsed Dive Time (min:sec) with DIVE and TIME icons.

- A (< 2 sec) to access Log 2.
- A (2 sec) to access Day History 1
- S (hold) to scroll through the previous dives' Log 1 screens at a rate of 4 per second.
- S (< 2 sec) to step through the Log 1 screens.
- M (< 2 sec) to step back through the Log 1 screens.
- No button (2 min) to revert to FREE SURF Main or Watch Main Time.
- M (2 sec), or 2 minutes of no button action, will revert to the Main.
- L (< 2 sec) - to toggle the Backlight On/Off. *Will be On for the duration time set.*
- L (2 sec), while the Backlight is On, - to reset the timer to keep it On for the full duration time set.

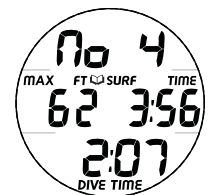


Fig. 42 - LOG 1

### LOG 2, information includes (Fig. 43):

- > Graphic No with the dive number (1 to 99).
- > Log (book) icon.
- > Date\* of the dive (Year, Month.Day or Day.Month).

- A (< 2 sec) to access Log 3.
- A (2 sec) to revert to Log 1
- S (hold) to scroll through the previous dives' Log 2 screens at a rate of 4 per second.
- S (< 2 sec) to step through the Log 2 screens.
- M (< 2 sec) to step back through the Log 2 screens.
- No button (2 min) to revert to FREE SURF Main or Watch Main Time.
- M (2 sec), or 2 minutes of no button action, will revert to the Main.
- L (< 2 sec) - to toggle the Backlight On/Off. *Will be On for the duration time set.*
- L (2 sec), while the Backlight is On, - to reset the timer to keep it On for the full duration time set.



Fig. 43 - LOG 2

### LOG 3, information includes (Fig. 44):

- > AM (or PM) icon, if 12 Hour Format.
- > Graphic No with the dive number (1 to 99).
- > Log (book) icon.
- > Time of Day\* (hr:min:sec) the dive began with TIME icon.
- > Temperature (minimum recorded that dive) with degrees icon and graphic F (or C).

- A (< 2 sec) to access Log 4.
- A (2 sec) to revert to Log 1
- S (hold) to scroll through the previous dives' Log 3 screens at a rate of 4 per second.
- S (< 2 sec) to step through the Log 3 screens.
- M (< 2 sec) to step back through the Log 3 screens.
- M (2 sec), or 2 minutes of no button action, will revert to the Main.
- L (< 2 sec) - to toggle the Backlight On/Off. *Will be On for the duration time set.*
- L (2 sec), while the Backlight is On, - to reset the timer to keep it On for the full duration time set.



Fig. 44 - LOG 3

\*The Dates and Time of Day recorded are based on the Watch Default Time selected. Main (home) Time will be used unless you have selected ALT Time (away) to be the Watch Default Time prior to the dives recorded.

**LOG 4 (Profile)**

The Log 4 screen allows you to analyze dives on site without the use of the PC interface system. The dive's Depth can be observed while elapsed dive time is increased or decreased throughout the dive beginning at descent.



Fig. 45 - LOG 4

**LOG 4**, information includes (Fig. 45):

- > Graphic No with the dive number (1 to 99).
  - > Max Depth with FT (or M) icon.
  - > Log (book) icon.
  - > Graphic Pro, indicating that the screen is displaying interactive Profile data for that dive.
  - > Elapsed Dive Time (min:sec) with DIVE and TIME icons.
- S (press/hold) - to increase EDT at a rate of 8 seconds of EDT per each real time second until released, displaying the Depth values for each EDT value.
  - S (< 2 sec) - to increase EDT at a rate of 1 second EDT for each press/release, displaying the Depth values for each EDT value.
  - M (< 2 sec) - to decrease EDT at a rate of 1 second EDT for each press/release
  - A (< 2 sec) to revert to Log 1 for the same dive.
  - M (2 sec), or 2 minutes of no button action, will revert to SURF MAIN.
  - L (< 2 sec) - to toggle the Backlight On/Off. *Will be On for the duration time set.*
  - L (2 sec), while the Backlight is On, - to reset the timer to keep it On for the full duration time set.

**HISTORY MODE**

History Mode is comprised of 2 groups, Day History and Full History. The Day group presents data recorded during the last calendar day of diving, while the Full group presents data pertaining to all dives ever conducted.

Data is retained when the battery is removed/replaced.

- A (2 sec), while viewing the Log 1 screen, to access Day History 1.

**DAY HISTORY 1**, information includes (Fig. 46):

- > Graphic HIST.
  - > Total accumulated Dive Time that day, up to 23:59:59 (hr:min:sec), with TIME icon.
  - > Total number of Dives conducted that day, total up to 199, with DIVE icon
- A (< 2 sec) to access Day History 2.
  - A (2 sec) to access Full History 1
  - No button (2 min) to revert to FREE SURF Main or Watch Main Time.
  - M (2 sec), or 2 minutes of no button action, will revert to the Main.
  - L (< 2 sec) - to toggle the Backlight On/Off. *Will be On for the duration time set.*
  - L (2 sec), while the Backlight is On, - to reset the timer to keep it On for the full duration time set.



Fig. 46 - DAY HISTORY 1

**DAY HISTORY 2**, information includes (Fig. 47):

- > Graphics DAY and d - t, indicating that Max Depth is the deepest recorded that day and Dive Time is time associated with that Max Depth.
  - > Max Depth with MAX and FT (or M) icons.
  - > Elapsed Dive Time (min:sec) with DIVE and TIME icons.
- A (< 2 sec) to access Day History 3.
  - A (2 sec) to revert to Day History 1
  - No button (2 min) to revert to FREE SURF Main or Watch Main Time.
  - M (2 sec), or 2 minutes of no button action, will revert to the Main.
  - L (< 2 sec) - to toggle the Backlight On/Off. *Will be On for the duration time set.*
  - L (2 sec), while the Backlight is On, - to reset the timer to keep it On for the full duration time set.

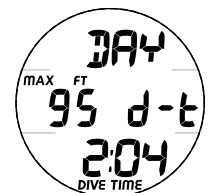


Fig. 47 - DAY HISTORY 2

**DAY HISTORY 3**, information includes (Fig. 48):

- > Graphics DAY and t - d, indicating that Dive Time is the longest recorded during that day and Max Depth is associated with that time.
  - > Max Depth with MAX and FT (or M) icons.
  - > Dive Time (min:sec) with DIVE and TIME icons.
- A (< 2 sec) to access Day History 4.
  - A (2 sec) to revert to Day History 1
  - No button (2 min) to revert to FREE SURF Main or Watch Main Time.
  - M (2 sec), or 2 minutes of no button action, will revert to the Main.
  - L (< 2 sec) - to toggle the Backlight On/Off. *Will be On for the duration time set.*
  - L (2 sec), while the Backlight is On, - to reset the timer to keep it On for the full duration time set.



Fig. 48 - DAY HISTORY 3

**DAY HISTORY 4**, information includes (Fig. 49):

- > Graphics DAY and AVE, indicating that the data displayed represents Averages for all dives conducted that day.
  - > Max Depth with MAX and FT (or M) icons.
  - > Dive Time (min:sec) with DIVE and TIME icons.
- A (< 2 sec) to revert to Day History 1
  - No button (2 min) to revert to FREE SURF Main or Watch Main Time.
  - M (2 sec), or 2 minutes of no button action, will revert to the Main.
  - L (< 2 sec) - to toggle the Backlight On/Off. *Will be On for the duration time set.*
  - L (2 sec), while the Backlight is On, - to reset the timer to keep it On for the full duration time set.



Fig. 49 - DAY HISTORY 4

**FULL HISTORY 1**, information includes (Fig. 50):

- > Graphic HIST.
  - > Dive Time, total up to 999:59:59 (hr:min:sec), then 1000 - Hr, then start over at 0:01 (min:sec), with TIME icon.
  - > Number of Dives, total up to 9999, with DIVE icon
- A (< 2 sec) to access Full History 2.
  - No button (2 min) to revert to FREE SURF Main or Watch Main Time.
  - A or M (2 sec), or 2 minutes of no button action, will revert to the Main.
  - L (< 2 sec) - to toggle the Backlight On/Off. *Will be On for the duration time set.*
  - L (2 sec), while the Backlight is On, - to reset the timer to keep it On for the full duration time set.



Fig. 50 - FULL HISTORY 1

**FULL HISTORY 2**, information includes (Fig. 51):

- > Graphics EVER and d - t, indicating that Max Depth is the deepest ever recorded and Dive Time is time associated with that Max Depth.
  - > Max Depth with MAX and FT (or M) icons.
  - > Elapsed Dive Time (min:sec) with DIVE and TIME icons.
- A (< 2 sec) to access Fully History 3.
  - A (2 sec) to revert to Full History 1
  - No button (2 min) to revert to FREE SURF Main or Watch Main Time.
  - M (2 sec), or 2 minutes of no button action, will revert to the Main.
  - L (< 2 sec) - to toggle the Backlight On/Off. *Will be On for the duration time set.*
  - L (2 sec), while the Backlight is On, - to reset the timer to keep it On for the full duration time set.



Fig. 51 - FULL HISTORY 2

**FULL HISTORY 3**, information includes (Fig. 52):

- > Graphics EVER and t - d, indicating that Dive Time is the longest ever recorded and Max Depth is associated with that time.
  - > Max Depth with MAX and FT (or M) icons.
  - > Dive Time (min:sec) with DIVE and TIME icons.
- A (< 2 sec) to access Full History 4.
  - A (2 sec) to revert to Full History 1
  - No button (2 min) to revert to FREE SURF Main or Watch Main Time.
  - M (2 sec), or 2 minutes of no button action, will revert to the Main.
  - L (< 2 sec) - to toggle the Backlight On/Off. *Will be On for the duration time set.*
  - L (2 sec), while the Backlight is On, - to reset the timer to keep it On for the full duration time set.



Fig. 52 - FULL HISTORY 3

**FULL HISTORY 4**, information includes (Fig. 53):

- > Graphic AVE (meaning Averages).
  - > Max Depth with MAX and FT (or M) icons, average of all dives ever recorded.
  - > Graphic xxd, representing the average number of dives conducted during each day of diving activity.
  - > Dive Time (min:sec), representing the average Dive Time of all dives recorded, with DIVE and TIME icons.
- A (< 2 sec) to revert to Full History 1
  - No button (2 min) to revert to FREE SURF Main or Watch Main Time.
  - A or M (2 sec), or 2 minutes of no button action, will revert to the Main.
  - L (< 2 sec) - to toggle the Backlight On/Off. *Will be On for the duration time set.*
  - L (2 sec), while the Backlight is On, - to reset the timer to keep it On for the full duration time set.

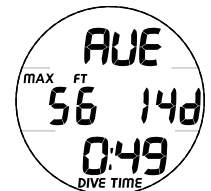


Fig. 53 - FULL HISTORY 4

# DIVE MODE

*Dive Mode is activated upon descent to the DSD (Dive Start Depth) set for 1 second, then the dive ends upon ascent above 2 FT (0.6 M) for the BDSI (Between Dive Surface Interval) time set.*

*If a descent is made while the Chrono is on the display, it will remain on the display (even after a dive is started), until M is pressed/released to display the Dive Main.*



**DIVE MODE**

Prior to the first dive of a new series, if Wet Activation is set Off, Dive Mode will not activate during operation in any Watch Mode. It must be in FREE Mode prior to activating Dive Mode.

If Wet Activation is set On, Dive Mode will activate from any operating surface mode including Watch modes once the A/d senses the DSD (Dive Start Depth) set for 5 seconds.

Once the first dive of a series is completed, repetitive dives will be activated regardless of what surface operating mode it is in.

Dives start upon descent to the DSD (Dive Start Depth) set (2, 4, or 6 FT; or 0.6, 1.2, or 1.8 M) for 1 second and end upon ascent to a Depth < 2 FT (0.6 M)\*\* for the BDSI (Between Dive Surface Interval) time set, thus descending before the BDSI time elapses is the same dive and descending at => the BDSI is a new repetitive dive.

*\*\*Upon ascent to < 2 FT (0.6 M), the Dive Main will display 0 FT (0.0 M) until you surface or descent is made to the DSD set during the BDSI.*

**BACKLIGHT**

- L (< 2 sec) - to toggle the Backlight On/Off. Will be On for the duration time set.
- L (2 sec), while the Backlight is On, - to reset the timer to keep it On for the full duration time set.

When Alarms strike, the Backlight will come On, if Off, and remain On until it is turned Off by L (< 2 sec), or it turns Off automatically after 10 seconds. If it is already On, it will remain On for 10 seconds from the time that the Alarm strikes unless you turn it Off during that 10 second time.

**DIVE MAIN**, information includes (Fig. 54):

- > Current Depth with FT (or M) icon. 0 when on the surface < BDSI time set.
- > Elapsed Dive Time (min:sec) with DIVE TIME icons.



Fig. 54 - DIVE MAIN

- A (< 2 sec) - to access ALT 1.
- M (< 2 sec) - to replace the Dive Main with Chrono (Run Timer) Status which will remain on display until M (< 2 sec) to replace Chrono with the Dive Main.

**DIVE ALT 1 (CDT Status)**, information includes (Fig. 55A/B):

- > Graphic TIMR.
- > Countdown Time (min:sec) with TIME icon, as >>
  - 0:00 if no time has been set, or it completed the countdown; or - min:sec set if Off (or Auto) and ready to start; or - min:sec remaining if On (or Auto) with a countdown in progress.
- > Graphic OFF (or ON, or Auto) flashing.



Fig. 55A - DIVE ALT 1 (CDT set On)

- S (< 2 sec) - to start/stop the countdown. Once started when set for Auto, the countdown repeats until stopped.
- S (2 sec), when set On or for Auto and while the countdown is stopped - to reset the time to the min:sec previously set.
- A (< 2 sec) - to step forward to ALT 2.
- M (< 2 sec) - to step back to DIVE MAIN (replace Chrono with Main).
- Reverts to Main in 30 seconds if A or M is not pressed.



Fig. 55B - DIVE ALT 1 (CDT set for Auto)

**DIVE ALT 2**, information includes (Fig. 56):

- > Day of the Week graphic (MON, TUE, etc.).
- > Time of Day (hr:min:sec) with TIME and AM (or PM) icons.
- > Temperature with °F (or °C).

- A (< 2 sec) - to revert to Dive Main.
- Revert to Dive Main after 10 seconds if A is not pressed.



Fig. 56 - ALT 2

**CHRONO STATUS**, information includes (Fig. 57):

When the Chrono is displayed, it will remain on the display until M (< 2 sec) to replace it with the Dive Main.

- > Graphic CHRO.
- > Elapsed run time counting up to 9:9:59.99 (min:sec\_ .01 sec).
- > Graphic LAP1 (up to LAP9).

- S (< 2 sec) - to start the Timer which counts up from 0:00\_00 (hr:min:sec\_ .01 sec) in increments of .01 sec. After the first 4.99 seconds, the .01 sec digits display 2 dashes (. - -).
- S (< 2 sec) - to save Lap 1's time and display the graphic LAP2 with the Timer continuing to count up. Total Run Time is always displayed until stopped.
- S (< 2 sec) - to save/display other Laps in progress up to # 9.
  - >> Subsequent Laps continue to be recorded with the earliest being discarded after 9, starting again with #1.
  - >> If the Chrono continues to run and total time reaches 199:59.99, it will Stop and record that as a Lap. Subsequent presses of S then to have no effect.
- A (< 2 sec) - to stop the Timer, save the Lap in progress and total time, then recall Lap 1, displaying the graphic LAP1 flashing and the Lap 1 time.
  - >> Subsequent presses of A (< 2 sec) will recall the other Laps.
  - >> When Laps are recalled, the .01 sec numerics are displayed.
- A (2 sec), after stopped by A (< 2 sec) - to Reset the Timer to 0:00.00.
- M (< 2 sec) - to replace the Chrono screen with the Dive Main, the Chrono will then operate in the background.



Fig. 57 - CHRONO (running)

# **WARNINGS**

# **&**

# **ALARMS**

**ALARMS**

When Alarms sound, the LED will flash. Also, the Backlight will come On (if Off) for 10 seconds, and a flashing icon or message will be displayed as an indication that an event is occurring and as a reminder to view the display to identify the event.

When the Audible stops, the LED will extinguish and the message will clear.

If the Audible is set OFF, it will not sound and the LED will not flash for any cautionary situation. Any icons or messages associated with the condition will still flash, and the Backlight will still come On.



Fig. 58 - WATCH CDT ALARM

**WATCH CDT ALARM** (Fig. 58)

When the Watch CDT reaches 0:00 (hr:min), the Audible will sound 3 sets of 3 beeps during which the graphic TIMR will flash on the Watch Main Time screen in place of Day of Week.

**WATCH DAILY ALARM** (Fig. 59)

Each day at the time set, the Audible will sound 3 sets of 3 beeps during which the graphic ALRM will flash on the Watch Main Time screen in place of Day of Week and the alarm (speaker) icon will flash.



Fig. 59 - WATCH DAILY ALARM

**LOW BATTERY ALARM, while in Watch Mode** (Fig. 60)

When a Low Battery warning condition occurs (< 2.75 volts), the Battery icon (shell with inner bar) will be displayed solid on the Watch Main Time screen.

When an Alarm condition occurs (< 2.50 volts), the graphics CHNG >> BATT will alternate on the Watch Main Time screen (each on .750 seconds, then blank .250 seconds) until the battery is changed or the unit shuts Off due to insufficient voltage.



Fig. 60 - WATCH LOW BATTERY ALARM

**FREE SURFACE CDT (COUNTDOWN TIMER) ALARM** (Fig. 61)

When the CDT reaches 0:00 (min:sec), the Audible will sound 3 sets of 3 beeps during which the graphic TIMR will flash on the Surface Main in place of the graphic FREE.

**FREE SURFACE SRT (SURFACE RECOVERY TIME) ALARM** (Fig. 62)

When Surface Recovery Time reaches the post dive surface interval time set (min:sec), the Audible will sound 3 sets of 3 beeps during which the graphic SRT will flash on the Surface Main in place of the graphic FREE.



Fig. 61 - FREE SURFACE CDT ALARM

**LOW BATTERY ALARM, while in FREE Mode** (Fig. 63, 64)

When a Low Battery warning condition occurs (< 2.75 volts), the Battery icon (shell with inner bar) will be displayed solid on the Surface Main screen.

When an Alarm condition occurs (< 2.50 volts), the graphics CHNG >> BATT will alternate on the Surface Main for 5 seconds (each on .750 seconds, then blank .250 seconds), then operation will revert to Watch Mode with the graphics alternating on the Watch Main Time screen until the battery is changed or the unit shuts Off due to insufficient voltage.

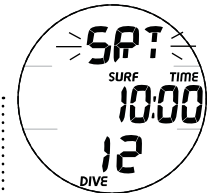


Fig. 62 - FREE SURFACE SRT ALARM

**FREE DIVE CDT (COUNTDOWN TIMER) ALARM** (Fig. 65)

When the CDT reaches 0:00 (min:sec), the Audible will sound 3 sets of 3 beeps during which the graphic TIMR will flash on the Dive Main.

**FREE DIVE EDT (repeating ELAPSED DIVE TIME) ALARM** (Fig. 66)

Each time the repeating Time Interval set elapses while in Dive Mode, the Audible will sound (2) 2 second beeps during which the graphic EDT will flash on the Dive Main.

**FREE DIVE RDI (REPEATING DEPTH INTERVAL) ALARM** (Fig. 67)

Each time the Repeating Depth Interval set elapses, the Audible will sound 3 sets of 3 beeps during which the graphic DPTH will flash on the Dive Main. The alarm will sound even for descents made after ascents to shallower depths are made. *RDI will not sound alarms at the DD depths set.*

**FREE DIVE DEPTH (DD1 to DD3) ALARMS** (Fig. 68)

Each time an alarm Depth is attained during descent, the Audible will sound 3 sets of 3 beeps during which the graphic DD1 (or DD2, DD3) will flash on the Dive Main.



Fig. 63 - FREE SURFACE LOW BATT WARNING



Fig. 65 - FREE DIVE CDT ALARM



Fig. 66 - FREE DIVE EDT ALARM



Fig. 67 - FREE DIVE RDI ALARM

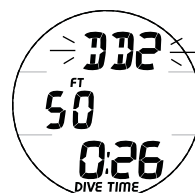


Fig. 68 - FREE DIVE DEPTH ALARM



Fig. 64 - FREE SURFACE LOW BATT ALARM

# REFERENCE

**UPLOADING SETTINGS & DOWNLOADING DATA**

The F10v3 is configured with a Data Port located on the back of the left side that enables it to be connected to a PC or MAC through a USB port using the Oceanic Computer Interface Cable, when viewing the Watch Default Time screen.

The Settings Upload portion of the OceanLog or DiverLog program can be used to set/change the Watch Time selections, Set A group selections (Alarms), and Set U group selections (Utilities).

The Download portion of the program can be used to retrieve/copy data (Download it) from the F10v3.

The data includes dive number, surface interval time, maximum depth, elapsed dive time, start date/time, start/end depth, lowest temperature underwater, sampling rate, dive profile, and set points.

The F10v3 checks for the presence of an interface device connection to the Data Port once every second while operating in Watch mode. Checks are not made if the Wet Activation contacts are wet.

When the cable is connected to the F10v3, a PC screen appears on the display with a 120 second countdown.

Upon sensing an interface connection with the PC or Mac, the countdown will be terminated and all segments of the LCD will be displayed. This indicates that the PC or Mac and F10v3 are connected and prepared for Upload of settings or Download of data, which is then initiated using the PC or Mac program.

Operation reverts to the Watch Default Time screen after completion of the Upload or Download operation, or after 2 minutes (the 120 second countdown reaches 0) if no PC or Mac action was taken.

*Prior to attempting to Download data from your F10v3 or Upload Settings to it, review the HELP section of the OceanLog or DiverLog program which serves as its User Manual. Recommended is to print those sections of HELP that you consider appropriate for your Interface activities.*

**PC requirements:**

- IBM®, or compatible, PC with USB Port
- Intel®, Pentium 4 or better microprocessor
- Microsoft®, Windows®, XP, Vista, 7, or 8
- Super VGA card or compatible video graphics adaptor (256 color or greater) with a minimum 800 X 600 pixel screen area of display settings
- 128MB of available RAM
- 64MB of available hard drive storage
- Mouse
- CD Rom drive
- Printer

**MAC requirements:**

- Mac with USB Port
- OSX 10.5 or later
- Super VGA card or compatible video graphics adaptor (256 color or greater) with a minimum 800 X 600 pixel screen area of display settings
- 128MB of available RAM
- 64MB of available hard drive storage
- Mouse
- Printer
- Internet connection to download App from the Apple App Store

For software updates, refer to the Oceanic web site at -

**[www.OceanicWorldwide.com](http://www.OceanicWorldwide.com)**

For support, call Oceanic Customer Service toll free at -

**(866) 732-7877**, 8 Am to 5 Pm USA Pacific time.

**⚠ WARNINGS:**

**Never, under any circumstances, poke any object through any slots or holes of the module. Doing so may damage the depth sensor, possibly resulting in erroneous depth displays.**

**If you are in doubt about the accuracy of your unit's depth readings, DO NOT attempt to dive with it until it has been inspected by Oceanic.**

**Never pressure test the module in an air environment. Doing so may damage the depth sensor, possibly resulting in erroneous depth or time readings.**

**Never spray aerosols of any kind on, or near, an Oceanic instrument. The propellants may chemically attack the plastic.**

**When a Low Battery condition is displayed prior to a dive, DO NOT attempt to dive with the unit until the battery is replaced.**

**CARE AND CLEANING**

Protect your F10v3 from shock, excessive temperatures, exposure to chemicals, and tampering. Protect the lens against scratches with a Instrument Lens Protector. Small scratches will naturally disappear underwater.

- Soak and rinse the F10v3 in fresh water at the end of each day of diving, and check to ensure that the areas around the Low Pressure (Depth) Sensor (Fig. 69a), PC Interface Data Port (Fig. 69b), and Buttons are free of debris or obstructions.
- To dissolve salt crystals, soak in lukewarm water or a slightly acidic bath (50% white vinegar/50% fresh water). After removal from the bath, place the F10v3 under gently running fresh water and towel dry before storing.
- Transport your F10v3 cool, dry, and protected.

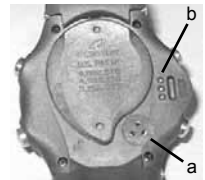


Fig. 69 - CASE BACK

**INSPECTIONS AND SERVICE**

Your F10v3 should be inspected annually by an Authorized Oceanic Dealer who will perform a factory prescribed function check and inspection for damage or wear. To keep the 2 year limited warranty in effect, this inspection must be completed one year after purchase (+/- 30 days).

Oceanic recommends that you continue to have an inspection performed every year to ensure it is working properly. The costs of annual inspections are not covered under the terms of the 2 year limited warranty.

**To Obtain Service:**

Take your F10v3 to an Authorized Oceanic Dealer.

To return your F10v3 to Oceanic:

- Record all data in the viewable Log and/or download the data in memory. All data will be erased during factory service.
- Package it using a protective cushioning material.
- Include a legible note stating the specific reason for return, your name, address, daytime phone number, serial number(s), and a copy of your original sales receipt and Warranty Registration Card.
- Send freight prepaid and insured using a traceable method to the nearest Oceanic Regional Facility, or to Oceanic USA.
- If shipping to Oceanic USA, obtain an RA (Return Authorization) number by contacting Oceanic at 510-562-0500 x761 or 800-435-3483 x 761, or send an e-mail to [service@oceanicusa.com](mailto:service@oceanicusa.com).
- Non warranty service must be prepaid. COD is not accepted.
- Additional information is available at the Oceanic web site >>>>

[www.Oceanicworldwide.com](http://www.Oceanicworldwide.com)

**BATTERY REPLACEMENT**

**⚠ NOTE: The procedures that follow must be closely adhered to. Damage due to improper Battery replacement is not covered by the 2 year warranty.**

The Battery Compartment should only be opened in a dry and clean environment with extreme care taken to prevent the entrance of moisture or dust.

As an additional precautionary measure to prevent formation of moisture in the Battery Compartment, it is recommended that the Battery be changed in an environment equivalent to the local outdoor temperature and humidity (e.g., do not change the Battery in an air conditioned environment then take it outside during a hot sunny day).

Inspect the Buttons, Lens, and Housing to ensure they are not cracked or damaged. If there is any sign of moisture in the F10v3, DO NOT attempt to use it for diving until it receives proper service by the Oceanic factory.

**⚠ CAUTION: Damage due to improper Battery replacement is not covered by the limited 2 year warranty.**

**When the battery is removed, settings and calculations for repetitive dives are retained in the unit's memory while a new battery is installed.**

**Battery Removal**

- Locate the Battery Compartment on the back of the unit.
- Rotate the Battery Cover clockwise 10 degrees using the special Battery Cover Tool provided (Fig. 70A), or by pushing the lower portion to the left while pushing the upper portion to the right (Fig. 70B).
- Lift the Cover with O-ring up and away from the Housing.



Fig. 70A - BATTERY COVER REMOVAL (using tool)



Fig. 70B - BATTERY COVER REMOVAL (without tool)

- Using care not to damage the Contact (Fig. 71a), slide the Battery up and out of the Left side of the Battery Compartment.
- Discard the Battery according to local regulations governing disposal of Lithium batteries.

**⚠ CAUTION: DO NOT allow a metal object to short circuit the top of the Battery which is positive (+) to the negative (-) contact of the Battery Compartment.**

**Inspection**

- Closely check all of the sealing surfaces for any signs of damage that might impair proper sealing.
- Inspect the Buttons, Lens, and Housing to ensure they are not cracked or damaged.

**⚠ WARNING: If damage or corrosion is found, return your F10v3 to an Authorized Oceanic Dealer, and DO NOT attempt to use it until it has received factory prescribed service.**

- Remove the Battery Cover O-ring and inspect it for any signs of deterioration or deformity. DO NOT use tools to remove the O-ring.
- To ensure proper sealing, O-ring replacement is highly recommended each time the Battery is replaced.
- Closely examine the Battery Cover and Housing for any signs of damage that might prevent proper sealing.
- Closely examine the inside of the Battery Compartment for any signs of corrosion indicating entrance of moisture into the unit.
- If corrosion is found, return the F10v3 to an Authorized Oceanic Dealer, and DO NOT attempt to use it until it has received factory service.
- If moisture is found, it is best to have the unit inspected and cleaned by an Authorized Oceanic Dealer.

**Battery Installation**

- Slide a new 3 volt type CR2430 Lithium Battery, negative side down into the Battery Cavity. Slide it in from the Left side (Fig. 72) and ensure that it slides under the contact clip on the lower/right rim of the cavity.
- Lightly lubricate the new Cover O-ring with silicone grease and place it on the inner rim of the Battery Cover. Ensure that it is evenly seated (Fig. 73).

**⚠ NOTE: The Cover O-ring must be a genuine Oceanic part that can be purchased from an Authorized Oceanic Dealer. Use of any other O-ring will void the warranty.**

- Carefully place the Battery Cover (with O-ring) into position on the rim of the Battery Compartment, then press it evenly and completely down into place.
- Maintain the Battery Cover securely in place and turn it counter clockwise 10 degrees using the special Battery Cover tool provided (Fig. 74A), or by pushing the lower portion to the right while pushing the upper portion to the left (Fig. 74B).

**Testing**

- Activate the unit and observing the display to ensure it is consistently clear and sharp in contrast throughout the screen.
- If any portions of the display are missing or appear dim, or if a Low Battery Condition is indicated, return your F10v3 to an Authorized Oceanic Dealer for a complete evaluation before attempting to use it.
- **Set the Time, Date, and Daily Alarm.**
- **Verify all Free Mode Set Points prior to diving.**

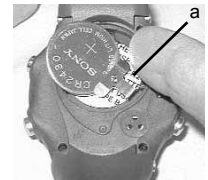


Fig. 71 - BATTERY REMOVAL



Fig. 72 - BATTERY INSTALLATION

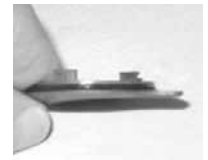


Fig. 73 - BATTERY COVER O-RING



Fig. 74A - COVER INSTALLATION (using tool)



Fig. 74B - COVER INSTALLATION (without tool)

**ALTITUDE SENSING AND ADJUSTMENT**

Prior to the first dive of a series of repetitive dives, Altitude (i.e., Ambient Pressure) is measured upon activation of Free Surface Mode and every 15 minutes until a dive is made or operation reverts to Main Time after 2 hours.

- > While it is operating in Watch Modes after a dive, measurements are taken every 15 minutes during the 24 hour period after surfacing.
- > Measurements are only taken when the unit is dry.
- > Two readings are taken, the second reading 5 seconds after the first. The readings must be within 1 foot (30 cm) of each other to record that Ambient Pressure as the current Altitude.

When diving in high altitude waters from 3,001 to 14,000 feet (916 to 4,270 meters), the F10 automatically adjusts to these conditions providing corrected Depth indication at intervals of 1,000 feet (305 meters).

No adjustments are made during any time that the Wet Contacts are bridged.

The F10v3 will not function as a Dive Gauge above 14,000 feet (4,270 meters).

## SPECIFICATIONS

### CAN BE USED AS

- Watch
- Digital Gauge for Free Dive activity

### WATCH MODES

- Main Time
- Alternate (supplemental information)
- Countdown Timer
- Daily Alarm
- Set Time/Date
- Chronograph (run timer)
- Set Time/Date:
  - Date Format (M.D, D.M)
  - Hour Format (12, 24)
  - Time of Day (hr:min)
  - Date (Year, Month, Day)
  - Alternate Time (Hour Differential) - (OFF, +1 to +23, - 1 to - 23 hours)
  - Default Time (Main - home, Alternate - away)
  - Show Dual Time (Yes, No)

### FREE SURFACE MODES

- Surface Main
- Alternates (CDT, supplemental information)
- Countdown Timer Setup
- Set Alarms
- Set Utilities
- Serial Number
- Chronograph (run timer)

### LOG/HISTORY MODES

- Log
- Day History
- Full History

### SET MODES

- Set Alarms:
  - Audible (OFF, ON)
  - SRT (OFF, ON, SET - 0:01 to 30:00 min:sec)
  - EDT (OFF, ON, SET - 0:10 to 9:59 min:sec)
  - RDI (OFF, ON, SET - 10 to 100 FT, 3 to 33 M)
  - DD1 (OFF, ON, SET - 30 to 330 FT, 10 to 100 M)
  - DD2 (OFF, ON, SET - 31 to 330 FT, 11 to 100 M)
  - DD3 (OFF, ON, SET - 32 to 330 FT, 12 to 100 M)
- Set Utilities:
  - Units (Imperial, Metric)
  - Wet Activation (OFF, ON)
  - Water Type (Sea, Fresh)
  - Backlight Duration (5, 10, 30, 60 sec)
  - DSD (2, 4, 6 FT; 0.6, 1.2, 1.8 M)
  - BDSI (0:01 to 1:00 min:sec)
- Serial Number
  - Factory set (up to 6 digits)

### NUMERIC DISPLAYS:

	<u>Range:</u>	<u>Resolution:</u>
• Time of Day	0:00_00 to 23:59:59 hr:min:sec	1 sec
• Dual Time	0:00 to 23:59 hr:min	1 min
• Temperature	0 to 212°F (- 18 to 100°C)	1°
• Watch Countdown Timer	0:00 to 23:59 hr:min	1 min
• Chronograph (Run Timer)	0:00.00 to 9:59:59.99	.01 sec
	hr:min:sec_ .01 sec	
• Dive Number	0 to 99	1
• Surface Interval Time	0:00:00 to 23:59:59 hr:min:sec	1 sec
• Free Mode Countdown Timer	0:00 to 59:59 min:sec	1 sec
• Current Depth	0 to 330 FT (100 M)	1 FT (0.1 M)
• Maximum Depth	330 FT (100 M)	1 FT (0.1 M)
• Elapsed Dive Time	0:00 to 59:59 min:sec	1 sec



**SPECIFICATIONS (continued) -****OPERATIONAL PERFORMANCE**

- Function:**            Accuracy:
- Depth                 $\pm 1\%$  of full scale
  - Timers                1 second per day

**Dive Counter:**

- Dives 1 to 99, 0 if no dive made yet.
- Resets to Dive 1, after midnight or by A+S (2 sec).

**Dive Log Modes:**

- Stores 99 most recent dives in memory for viewing.
- After 99 dives, adds next dive in memory and deletes the oldest dive.

**Altitude:**

- Operational from Sea Level (= 0 to 3,000 feet/915 meters) to 14,000 feet (4,270 meters) elevation.
- Measures ambient pressure every 30 minutes in Watch Mode and every 15 minutes while in FREE Mode.

**Power:**

- Battery                (1) 3 vdc, CR2430, Lithium battery.
- Shelf life             Up to 7 years (when shipped from factory in Deep Sleep mode).
- Replacement        User replaceable (annual recommended).
- Use Life                300 hours using as a Watch/Dive Gauge.  
                              25 hours using as a Dive Gauge with the Backlight on full time during dives.  
                              1 year using as a Watch only.

**Battery Indicator:**

- Warning - icon on solid < 2.75 volts > 2.50 volts, Battery change recommended.
- Alarm - icon on flashing at  $\leq 2.50$  volts, change the Battery, will function only as a Watch.

**Dive Mode Activation:**

- Automatic - by immersion in water and descent to Dive Start Depth set for 1 second.
- When in Watch Mode, Dive Mode will not activate if Wet Activation is set Off.
- Cannot operate in Free Dive Mode at elevations higher than 14,000 feet (4,270 meters).
- Reverts to Watch Mode if no dive is made within 2 hours after entry into Free Surface Mode.

**Operating Temperature:**

- Out of the water - between 20 °F and 140 °F (-6 and 60 °C).
- In the water - between 28 °F and 95 °F (-2 and 35 °C).
- At extremely low temperatures, the LCD may become sluggish, but this will not affect it's accuracy.  
  >> If stored or transported in extremely low temperature areas (below freezing), you should warm the unit and its battery with body heat before diving.

**Storage Temperature:**

- Out of the water (in storage case) - between 14 °F and 158 °F (-8 and 70 °C).

## GLOSSARY

**Audible Alarm** - A emitted tone that alerts the diver to potential danger.

**Depth Sensor** - An electro-mechanical device that converts water pressure into an electrical signal, that is converted to a visual depth display.

**Display** - A visual readout of information.

**Dive Log Mode** - A display of recorded dive information.

**Elapsed Dive Time** - The total time spent underwater during a dive that begins at the start depth set and ends upon ascent to the end depth.

**Graphic Diver Interface™** - Feature of Oceanic digital gauges that indicate the diver's status (icons, graphic displays).

**Icon** - A small pictorial representation of an operational mode or information.

**LCD** - Abbreviation for liquid crystal display, an easily viewed low voltage display typically found on digital dive gauges.

**Maximum Depth** - The deepest depth attained during a dive.

**Mode** - A specific set of functions in a digital gauge.

**Out of Range** - The point at which a dive gauge can no longer provide accurate calculations or information.

**Transducer** - An electro-mechanical device in a dive gauge that acts as a depth sensor.



### WARNINGS:

- **Conducting Free dives within a 24 hour period after conducting SCUBA dives, combined with the effects of multiple rapid Free Dive ascents, increases your risk of decompression sickness. Such activities may result in accelerated entry into decompression which could cause serious injury or death.**
- **Combining competitive type Free Dive activities that involve multiple descents/ascents with activities utilizing SCUBA during the same 24 hour period is not recommended. Presently, there is no data relating to such activities.**
- **It is highly recommended that anyone planning to become involved in competitive type Free dive activities obtain proper instruction and training from a recognized Free Diving trainer. It is imperative that the physiological affects be understood and the diver is physically prepared.**
- **If your F10v3 stops working for any reason while operating in Free Dive Mode, it is important that you have anticipated this possibility and are prepared for it.**
- **If you dive in situations where your trip would be ruined or your safety would be jeopardized by losing the use of your F10v3, a backup instrument system is highly recommended.**

**INSPECTION / SERVICE RECORD**

F10v3 Serial Number: \_\_\_\_\_  
 F10v3 Firmware Rev: \_\_\_\_\_  
 Date of Purchase: \_\_\_\_\_  
 Purchased from: \_\_\_\_\_

Below to be filled in by an Authorized Oceanic Dealer:

Date	Service Performed	Dealer/Technician

**OCEANIC WORLD WIDE**

<p>OCEANIC USA                  2002 Davis Street                  San Leandro, CA 94577                  Tel: 510/562-0500                  Fax: 510/569-5404                  Web: www.OceanicWorldwide.com                  E-mail: hello@oceanicusa.com</p>	<p>OCEANIC AUSTRALIA                  Rosebud, Victoria, Australia                  Tel: 61-3-5986-0100                  Fax: 61-3-5986-1760                  Web: www.OceanicAUS.com.au                  E-mail: sales@OceanicAUS.com.au</p>
<p>OCEANIC EUROPE                  Augsburg, Germany                  Tel: +49 (0) 821 810342 0                  Fax: +49 (0) 821 810342 29                  Web: www.oceanic-eu.com                  E-mail: office@oceanic.de</p>	<p>OCEANIC ASIA PACIFIC                  Singapore                  Tel: +65-6391-1420                  Fax: +65-6297-5424                  E-mail: info@oceanicasia.com.sg</p>
<p>OCEANIC UK                  Devon, United Kingdom                  Tel: (44) 1404-891819                  Fax: +44 (0) 1404-891909                  Web: www.OceanicUK.com                  E-mail: helpyou@oceanicuk.com</p>	<p>OCEANIC HAWAII and MICRONESIA                  Kapolei, Hawaii                  Tel: 808-682-5488                  Fax: 808-682-1068                  E-mail: lbell@oceanicusa.com</p>

**⚠ WARNING: If you do not fully understand how to use the F10v3 after reading this manual, or if you have any questions, you should seek instruction in its use from your Authorized Oceanic Dealer before diving with it.**

# **F.10 v.3**

## **OPERATING MANUAL**