



versã PRO

operating manual



OCEANIC®

LIMITED TWO-YEAR WARRANTY

For details, refer to the Product Warranty Registration Card provided.

COPYRIGHT NOTICE

This operating manual is copyrighted, all rights are reserved. It may not, in whole or in part, be copied, photocopied, reproduced, translated, or reduced to any electronic medium or machine readable form without prior consent in writing from Oceanic / 2002 Design.

Versa Pro Operating Manual, Doc. No. 12-2283

© 2002 Design 2001

San Leandro, Ca. USA 94577

TRADEMARK NOTICE

Oceanic, the Oceanic logo, Versa Pro, the Versa Pro logo, Smart Glo, and Oceanglo are all registered and unregistered trademarks of Oceanic. All rights are reserved.

PATENT NOTICE

U.S. Patents have been issued, or applied for, to protect the following design features: Dive Time Remaining (U.S. Patent no. 4,586,136), Data Sensing and Processing Device (U.S. Patent no. 4,882,678), and Variable Ascent Rate Indicator (U.S. Patent no. 5,156,055). User Setable Display (U.S. Patent no. 5,845,235) is owned by Suunto Oy (Finland).

DECOMPRESSION MODEL

The programs within the Versa Pro simulate the absorption of nitrogen into the body by using a mathematical model. This model is merely a way to apply a limited set of data to a large range of experiences. The Versa Pro dive computer model is based upon the latest research and experiments in decompression theory. **Still, using the Versa Pro, just as using the U.S. Navy (or other) No Decompression Tables, is no guarantee of avoiding decompression sickness, i.e. "the bends."** Every diver's physiology is different, and can even vary from day to day. No machine can predict how your body will react to a particular dive profile.

CONTENTS

LIMITED TWO-YEAR WARRANTY	2
NOTICES	2
DECOMPRESSION MODEL	2
FEATURES AND DISPLAYS	7
INTERACTIVE CONTROL CONSOLE	8
BAR GRAPHS	9
Tissue Loading Bar Graph (TLBG)	9
Oxygen Bar Graph (O2BG)	10
Variable Ascent Rate Indicator (VARI)	10
ALPHA / NUMERIC DISPLAYS	11
Depth Displays	11
Time and Date Displays	12
Temperature Display	13
AUDIBLE ALARM	13
LED Warning Light	13
BACKLIGHT	15
POWER SUPPLY	15
Battery Consumption Indicator	15
Low Battery Condition	16
FO2 MODE	17
FO2 50% Default	18
ACTIVATION AND SETUP	19
ACTIVATION	20
SURFACE MODE	21
Accessing Other Modes	21
SET MODES	22
ENTERING SETTINGS -SET MODE #1	23
ENTERING SETTINGS -SET MODE #2	27

CONTENTS (continued)

PLAN AND DIVE MODES	41
PRE DIVE PLANNING SEQUENCE™	42
TISSUE LOADING BAR GRAPH	44
OXYGEN ACCUMULATION BAR GRAPH	45
VARIABLE ASCENT RATE INDICATOR	45
CONTROL OF DISPLAYS	46
NO DECOMPRESSION DIVE MODE	46
DECOMPRESSION DIVE MODE	48
VIOLATION MODES	51
Conditional Violation Mode	52
Delayed Violation Modes	53
Immediate Violation Mode and Gauge Mode	54
HIGH PO ₂ DIVE MODE	56
HIGH OXYGEN ACCUMULATION	57
USER SET DIGITAL GAUGE MODE	58
UNEXPECTED LOSS OF DISPLAYED INFORMATION	58
POST DIVE MODES	59
POST DIVE SURFACE MODE	60
TRANSITION PERIOD	60
AFTER THE TRANSITION PERIOD (THE FIRST 2 HOURS)	62
To activate the Backlight -	62
To access the Pre Dive Planning Sequence -	62
To access the Time to Fly Countdown	63
To access the Time to Desaturate Countdown	63
Log Mode	64
AFTER THE FIRST 2 HOURS	66
WET CONTACTS	67
DOWNLOADING DATA TO A PC	68

CONTENTS (continued)

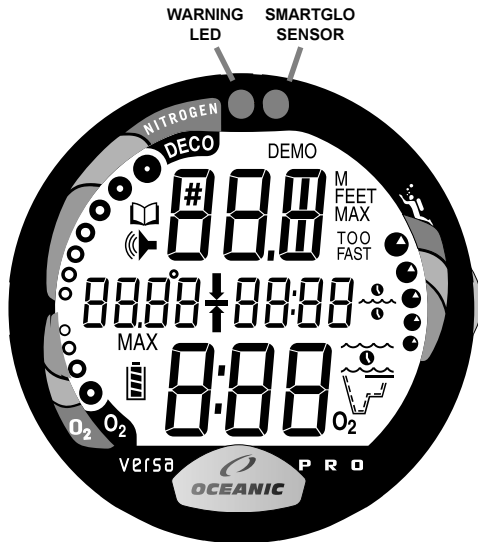
SIMULATOR (DEMO) MODE	69
GENERAL	75
CARE AND CLEANING	76
INSPECTIONS AND SERVICE	76
BATTERY REPLACEMENT	78
SPECIFICATIONS	83
OCEANIC WORLD WIDE	88
SERVICE RECORD	90



Pay special attention to items marked with this Warning symbol.



WARNING: Prior to diving with the Versa Pro, you must also read and understand the Oceanic Dive Computer Safety and Reference Manual.



VERSAPRO FULL DISPLAY



WARNING: Prior to diving with the Versa Pro, you must also read and understand the Oceanic Dive Computer Safety and Reference Manual which provides Important Warnings and Safety Recommendations as well as general product information.

FEATURES and DISPLAYS

INTRODUCTION

Welcome to Oceanic and thank you for choosing the Versa Pro !

It is extremely important that you read this Operating Manual in sequence and understand it completely before attempting to use the Versa Pro.

It is equally important that you read the Oceanic Dive Computer Safety and Reference Manual provided with your Versa Pro. It contains information that you must become familiar with prior to diving with your Versa Pro.

Remember that technology is no substitute for common sense, and a dive computer only provides the person using it with data, not the knowledge to use it.

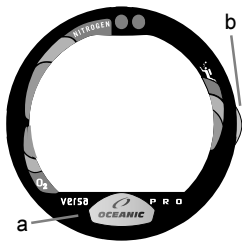


Fig. 1 - Interactive Control

INTERACTIVE CONTROL CONSOLE

The Interactive Control Console consists of two Control Buttons which allow you to select display options and access specific information when you want to see it. They are also used to enter settings, activate the Backlight, and acknowledge the Audible Alarm.

The Front button is referred to as **Advance** (Fig. 1 a) and the Side button as **Select** (Fig. 1 b).

BAR GRAPHS

Tissue Loading Bar Graph (TLBG)

The Tissue Loading Bar Graph (Fig. 2a) represents tissue loading of nitrogen, showing your relative no decompression or decompression status. As your depth and elapsed dive time increase, segments will add to the Graph, and as you ascend to shallower depths, the Bar Graph will begin to recede, indicating that additional no decompression time is allowed for multilevel diving.

The Tissue Loading Bar Graph monitors 12 different nitrogen compartments simultaneously and displays the one that is in control of your dive. It is divided into a green No Decompression (normal) zone, a yellow Caution zone (also No Decompression), and a red Decompression (danger) zone.

While you cannot provide a guarantee against the occurrence of decompression sickness, you may choose your own personal zone of caution based upon age, physique, excessive weight, etc., to reduce the statistical risk.



NOTE: Displays associated with oxygen and the O2 Bar Graph will only appear if FO2 has been set at a value other than 'Air' (e.g., a numerical value).

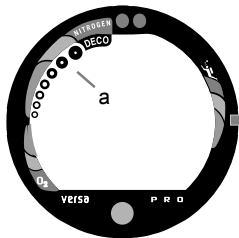


Fig. 2 - TLBG

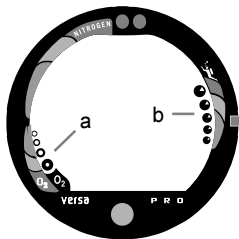


Fig. 3 - O2BG and VARI

Oxygen Accumulation Bar Graph (O2BG)

The O2 Bar Graph (Fig. 3a) represents oxygen loading, showing the maximum of either per dive accumulated oxygen, or 24 hour period accumulated oxygen.

As your oxygen exposure (accumulation) increases during the dive, segments will add to the Bar Graph, and as loading decreases, it will begin to recede, indicating that additional exposure is allowed for that dive and 24 hour period.

Variable Ascent Rate Indicator (VARI)

The Variable Ascent Rate Indicator (Fig. 3b) provides a visual representation of ascent speed (i.e., an ascent speedometer). Green is a 'normal' rate, yellow a 'caution' rate, and red is 'Too Fast'.

The segments of the Variable Ascent Rate Indicator represent two sets of speeds which change at a reference depth of 60 feet (18 meters). Refer to the chart for segment values.

Deeper than 60 feet (18 m)

Segments Displayed	Ascent Rate =	
	FPM	MPM
0	0-20	0 - 6
1	21-30	6.5-9
2	31-40	9.5-12
3	41-50	12.5-15
4	51-60	15.5-18
5	>60	>18

60 feet (18 m) & Shallower

Segments Displayed	Ascent Rate =	
	FPM	MPM
0	0-10	0 - 3
1	11-15	3.5-4.5
2	16-20	5-6
3	21-25	6.5-7.5
4	26-30	8-9
5	>30	>9

Variable Ascent Rate Indicator



WARNING: At depths greater than 60 feet (18 meters), ascent rates should not exceed 60 feet per minute (18 meters per minute). At depths of 60 feet (18 meters) and shallower, ascent rates should not exceed 30 feet per minute (9 meters per minute).

ALPHA / NUMERIC DISPLAYS

Each numeric and graphic display represents a unique piece of information. It is imperative that you understand the formats, ranges, and values of the information represented to avoid any possible misunderstanding that could result in error.

Depth Displays

During a dive, the **Current Depth** display (Fig. 4a), indicates depths from 0 to 330 feet (99.9 meters) in 1 foot (.1 meter) increments.

By pressing the Advance (Front) button, the **Maximum Depth** reached during that dive will be displayed in the center/left portion of the display (Fig. 4b).

- When the unit is set to operate as a digital depth gauge/timer (referred to as User Set Gauge Mode), the Depth Display range is 'extended' to 399 feet (120 meters). At depths greater than 99.9 meters it will indicate metric values in increments of 1 meter.

During a Decompression Dive, the required **Ceiling Stop Depth** is displayed in the center of the screen. Maximum Depth can be viewed by pressing the Advance (Front) button.

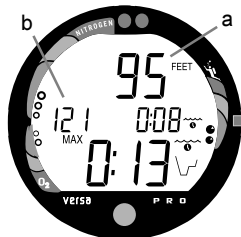


Fig. 4 - Depth Displays

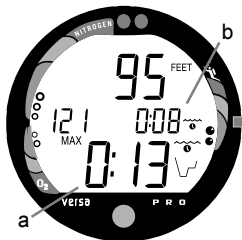


Fig. 5 - Time Displays

Time and Date Displays

Time displays are shown in hour:minute format (i.e., 1:16 represents 1 hour and 16 minutes, not 116 minutes!). The colon that separates hours and minutes blinks once per second when the display is indicating real time (e.g., Elapsed Dive Time), and is solid (non-blinking) when times are calculated projections (e.g., Time to Fly).

The **Main Time** display is located in the lower portion of the display (Fig. 5a) and a **second time display** (Fig. 5b) is located in the center/right. Both displays are identified by a clock icon.

- Time of Day can be set for 12 hour format (Am/Pm) or 24 hour format.



Fig. 6 - Date Display

Date is displayed in the center/left portion of the screen (Fig. 6a) only to identify dive data while it is viewed in the Log Mode.

- When Units of Measure are set for 'Imperial', the Month appears to the left of Day. When set for Metric, the Month appears to the right of Day.

Temperature Display

Ambient Temperature is displayed in the center/left portion of the screen (Fig. 7a) while in the Surface Mode and Log Mode, and can be viewed as part of an Alternate Display when the Advance (Front) button is pressed while in a dive mode.

If the Temperature exceeds a value of '99', two dashes (- -) will be displayed on the screen until the unit's temperature decreases to '99'.



NOTE: The Informational Displays are described in detail as the various operating modes they appear in are presented throughout this manual.

AUDIBLE ALARM

LED Warning Light

A red LED Warning Light and Speaker icon are synchronized with the Audible Alarm and will illuminate the display when the Alarm emits a tone. They will turn OFF when the Alarm is acknowledged, or Set OFF (a user setting).

When warning situations activate the Alarm, the unit will emit a continuous tone for 30 seconds, or until the situation is corrected, or it is acknowledged by pressing the Advance (Front) button for 2 seconds. If acknowledged by the user and the situation corrected, the Alarm will sound again upon reentry into the warning situation, or entry into another type of warning situation.

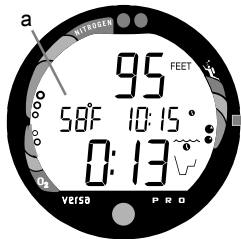


Fig. 7 - Temperature Display

Situations that will sound the Alarm, if it is turned ON (a user setting), include -

- Entry into Decompression Mode
- PO₂ => than the Max PO₂ Alarm (a user setting), or => 1.60 ATA.
- Descent deeper than the Max Depth Alarm (a user setting).
- Nitrogen Bar Graph Alarm (a user setting).
- Dive Time Remaining Alarm (a use setting).
- Elapsed Dive Time Alarm (a use setting).
- O₂ Accumulation => allowable per dive limit, or limit for a 24 hour period.
- Ascending above a required Decompression stop depth for less than 5 minutes (Conditional Violation).
- Ascent rate exceeds 60 feet/minute (18 meters/minute) if greater than 60 feet (18 meters), or 30 feet/minute (9 meters/minute) at 60 feet (18 meters) and shallower.

During the following situations, the 30 second continuous tone will be followed by a 5 second steady beep that will not turn off when acknowledged, even if it was user Set OFF -

- Ascending above a required Decompression stop depth for more than 5 minutes (Delayed Violation).
- Decompression requires a ceiling stop depth of 70 feet/21 meters or deeper.
- Being on the surface for 5 minutes after a Conditional Violation (Permanent Violation).

A single short beep (which cannot be disabled) is emitted for the following -

- After the Diagnostic countdown, if everything is okay.
- If the unit automatically returns to Surface Mode from Simulator Mode.
- Upon completion of a Hot Swap battery change with calculations saved.
- Change from Delayed to Full Violation 5 minutes after the dive.

BACKLIGHT

To activate the Backlight - press the Select (Side) button.

- On the surface, the Smart Glo® feature senses the intensity of natural light present. If a low level of light is present, the Backlight will activate and illuminate the display for 5 seconds, or the Duration time (a user setting).
- During a dive, the Oceanglo® feature will activate the Backlight and the display will be illuminated for 5 seconds, or the Duration time set (a user setting).
- The Backlight does not operate during a Low Battery condition.
- Press the button again to activate as desired.

POWER SUPPLY

The Versa Pro utilizes one (1) type CR 2450 Lithium 3 volt cell that should provide 300 hours of continuous, or 50 activation periods, of operation. If you conduct 1 dive each time the unit is activated, you should obtain approximately 50 dives. If you conduct 3 dives each time the unit is activated, you should obtain approximately 150 dives.

Battery Indicator

A Battery Indicator provides an indication battery condition. When power is sufficient for normal unit operation, the Indicator will be displayed during Surface Mode (Fig. 8a). The Indicator will not be displayed during Dive Mode(s).



Fig. 8 - Battery Indicator

Low Battery Condition

Voltage level is checked upon activation and every 10 minutes during operation.

- When the unit estimates that 75 % of the Rated Power has been consumed, the **lower bar** of the Battery Indicator (only segment) will be displayed, and the outline of the Indicator will flash once per second as a warning that the battery is to be replaced prior to conducting any further dives.
- Upon decreasing to a voltage level that will no longer sustain proper operation, the Indicator will flash 5 times followed by shutdown of the unit.
- If a Low Battery Condition exists when the unit is activated (by pressing the button), the graphic bAT and the Battery Indicator will appear flashing for 5 seconds (Fig. 9) followed by shutdown of the unit.
- If the button is not pressed to activate the unit prior to a dive, and a Low Battery Condition exists, the Battery Indicator will appear flashing as a warning upon descent past 4 feet (1.2 meters). No other information will be displayed.

- If the unit did not display a Low Battery Condition 'prior to' entering the Dive Mode, and a Low Battery Condition occurs during the dive, there will be sufficient battery power to maintain unit operation for the remainder of 'that dive'. The Battery Indicator will appear after the dive in Surface Mode.



Fig. 9 -Low Battery Condition

When the Battery is removed, settings and nitrogen and oxygen calculations for repetitive dives will be retained, if a new battery can be inserted within 8 seconds. Otherwise the calculations will reset to zero and settings such as Time, Date, and FO2 must be reset.

FO2 MODE

After Activation, the Versa Pro will operate as an Air computer without displaying information associated with oxygen calculations, unless it is set for a percentage of oxygen (FO2) other than Air (a numerical value between 21 and 50 %).

When set with an **FO2 value of 'Air'** (Fig. 10), the Versa Pro will perform calculations the same as if FO2 were set for 21% oxygen, internally accounting for oxygen loading for any subsequent Nitrox dives. However, oxygen related displays, warnings, and the O2 Bar Graph will not appear on the display for that dive, or subsequent dives, unless FO2 is set for a numerical value (21 - 50).

Once a dive is made with the unit set as a nitrox computer (FO2 set for a numerical value), it cannot be programmed to operate as an 'Air' computer until 24 hours after the last dive. 'Air' will not be displayed as an option in the FO2 Mode. However, you can set FO2 for 21% for use with Air.

When FO2 is set at a **value of 21%** (Fig. 11), the unit will remain set at 21% for subsequent nitrox dives until FO2 is set to a higher value, or until it automatically turns off and is reactivated.

Setting FO2 is described on Page 23.



Fig. 10 - FO2 set for Air



Fig. 11 - FO2 set for 21%



Fig. 12 - FO2 Default ON

FO2 50% Default

If the Default is set to ON (Fig. 12) and FO2 is set to a value 'greater than 21%', the FO2 set point value will automatically revert to 50% 10 minutes after that dive. The Maximum Depth that can be achieved with a PO2 of 1.60 ATA will also be displayed.

- FO2 must therefore be reset for each repetitive nitrox dive, or the value will automatically 'default' to 50(%) and the dives will be calculated based on 50% O₂ (50% nitrogen) for oxygen calculations and 21% O₂ (79% nitrogen) for nitrogen calculations.

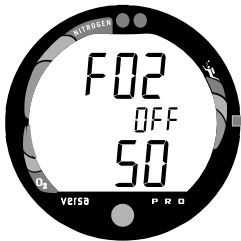


Fig. 13 - FO2 Default OFF

If the Default is set to OFF (Fig. 13), the FO2 value for repetitive dives remains the same as previously set until the set point is manually changed.





WARNING: Prior to diving with the Versa Pro, you must also read and understand the Oceanic Dive Computer Safety and Reference Manual which provides Important Warnings and Safety Recommendations as well as general product information.

ACTIVATION and SETUP

ACTIVATION

⚠ WARNING: If the unit is activated at elevations higher than 14,000 feet (4,267 meters), it will perform a diagnostic check followed by immediate shutdown.

To Activate the Versa Pro press and release the Advance (Front) Button.

- Upon manual activation, the unit will enter Diagnostic Mode (Fig. 14), displaying all segments of the LCD as 8's, followed by dashes (- -), then a countdown from 9 to 0. Diagnostic Mode checks the display and battery voltage to ensure that everything is within tolerance and functioning properly.
- After manual activation, it will also check the ambient barometric pressure, and calibrate its present depth as zero. At elevations of 2,000 feet (610 meters) or higher, it will recalibrate itself to measure depth in feet of fresh water instead of feet of sea water.



Fig. 14 - Diagnostic Mode

Backup Activation (only if Water Activation is set ON)

As a backup, the Versa Pro will also automatically activate by water contact. This is accomplished by bridging the gap between contacts located on the Button stems and back of the case. The graphic H₂O that will be displayed as an indication is described later.

If no dive is made within 2 hours after initial activation, the unit will automatically deactivate. If the wet contacts are still bridged, the unit will reactivate and display the H₂O graphic.

SURFACE MODE

Surface Mode (Fig. 15), identified by the Surface Time icon, follows Diagnostic Mode after Activation. Information includes Dive Number '0' (no dive made yet), Temperature (and icon), Time of Day (with icon), the Battery Consumption Indicator, and Surface Time (with flashing colon).



NOTE: If the wet contacts are bridged, the graphic 'H2O' will appear in place of the dive number '0' (Fig. 16). After the unit is rinsed and dried, '0' will replace 'H2O'.

To activate the Backlight:

- press the Select (Side) button.

Accessing Other Modes

While in the Surface Mode you can access various other Modes that are described in detail throughout this manual.

- Press the Advance (Front) button to access a sequence that includes Plan, Fly, DeSaturate, and Log Modes.
- Press the Select (Side) button momentarily (less than 2 seconds) to activate the Backlight.
- Press Both buttons (simultaneously) to access Set and Simulator Modes.



Fig. 15 - Surface Mode



Fig. 16 - Surface Mode
(rinse and dry the unit)



Fig. 17 - Set Mode 1

SET MODES

To help simplify the operations you might perform at the dive site, settings are divided into 2 categories. Set Mode #1 includes several settings that you would change more often and Set Mode #2 includes those items not likely to change once you set them. Set Mode 2 can be accessed by first entering settings in Set Mode 1, or by bypassing Set Mode 1.

After gaining access to Set Mode 1 or Set Mode 2, settings can be made in sequence one after the other, or you can access a specific item that you want to set, bypassing others.

Set Mode Access Timing

While in Surface Mode, press Both buttons simultaneously and hold -

- after 2 seconds, SET: 1 appears (Fig. 17)
- after 2 more seconds, SET: 2 appears (Fig. 18)
- Access is gained by releasing the buttons during the 2 second window in which SET: 1 or SET: 2 appears. then pressing the Advance (Front) button.
- If the buttons are held longer, and SET 1 and 2 are both bypassed, the unit will go to Simulator (Sim) Mode which is described on page 69.
- While in the Set Mode, if neither button is pressed during a 2 minute period, the unit will revert to Surface Mode.



Fig. 18 - Set Mode 2

ENTERING SETTINGS -SET MODE #1

TO SET - FO2 (while in the Surface Mode)

Factory set for Air, FO2 can also be set to values between 21 and 50% in increments of 1%.

- Press Both buttons simultaneously, release when SET: 1 appears.
- Press and release the Advance (Front) button, **FO2** appears with the value flashing (Fig. 19).
- Press and release the Select (Side) button to increase the FO2 value 1% from 21 to 50%, then display 'Air' again.
- For each FO2 value that appears, the display indicates the Maximum Depth that can be achieved for a PO2 of 1.60 ATA (Fig. 20), or the setting selected by the user. If FO2 is set for Air, no value is displayed.
- Press the Advance (Front) button to accept the setting and advance to Set Depth Alarm, or press and hold Both buttons for 2 seconds to revert to Surface Mode.



Fig. 19 - Set FO2



Fig. 20 - FO2 set for 32%

TO SET - MAX DEPTH ALARM

(while in the Surface Mode)

Factory set for 330 feet, the Alarm can be set to values between 30 feet (3 meters) and 330 feet (99 meters) in increments of 10 foot (3 meters).

- Press Both buttons simultaneously, release when SET: 1 appears.
- Press and release the Advance (Front) button, **FO2** appears with the value flashing.
- Press the Advance (Front) button **1 more time.**
- The graphics **FEET MAX** and **dEEP**, and Alarm icon appear with the **Max Depth** value flashing (Fig. 21).
- Press and release the Select (Side) button until the desired Depth Alarm value appears.
- Press the Advance (Front) button to accept the setting and advance to Elapsed Dive Time Alarm, or press and hold Both buttons for 2 seconds to revert to Surface Mode.



Fig. 21 - Set Max Depth Alarm

TO SET - ELAPSED DIVE TIME ALARM

(while in the Surface Mode)

Factory set for 0:00 hr:min, the Alarm can be set to values between 0:10 and 3:00 hr:min in increments of 0:05 hr:min.

- Press Both buttons simultaneously, release when SET: 1 appears.
- Press and release the Advance (Front) button, **FO2** appears with the value flashing.
- Press the Advance (Front) button **2 more times**.
- The graphic **EdT**, and Alarm and Dive Time icons appear with the **Elapsed Dive Time** value flashing (Fig. 22).
- Press and release the Select (Side) button until the desired Alarm value appears.
- Press the Advance (Front) button to accept the setting and advance to PC Interface, or press and hold Both buttons for 2 seconds to revert to Surface Mode.



Fig. 22 - Set Elapsed Dive Time Alarm



NOTE: For more information regarding PC Interface, refer to page 69 of this manual and to documents provided with the PC download product.

PC INTERFACE

PC Interface is not a setting, it is included in the Set 1 menu for easy access when data in the Versa Pro's memory is to be downloaded (copied) to the PC download software program for storage and viewing.

To download data (while in the Surface Mode)-

- Press Both buttons simultaneously, release when SET: 1 appears.
- Press and release the Advance (Front) button, **FO2** appears with the value flashing.
- Press the Advance (Front) button **3 more times**.
- The graphic **PC** appears (Fig. 23), then a 120 second countdown timer is displayed. Download must be initiated before the timer reaches 00.
- Download is initiated by the external device requesting data transfer (i.e., the PC download program).
- The unit reverts to Surface Mode after completion of the Download operation, or after 2 minutes if neither button is pressed.

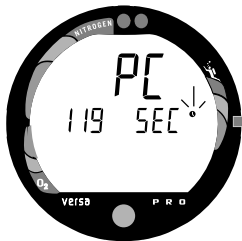


Fig. 23 - PC Interface

ENTERING SETTINGS -SET MODE #2

These settings are ones that are not likely to change. To save time at the dive site, verify the set points and adjust them as desired prior to departing on the day's dive trip.

TO SET - UNITS OF MEASURE

(while in the Surface Mode)

Factory set for Imperial, Units of Measure can also be set for Metric.

- Press Both buttons simultaneously, release when SET: 2 appears.
- Press and release the Advance (Front) button, the Units screen appears with the graphic FT (or M), and Temperature icon and letter F (or C) flashing (Fig. 24).
- Press the Select (Side) button to toggle between Imperial (F and Feet) and Metric (M and C) units.
- Press the Advance (Front) button to accept the setting and advance to Set Hour Format, or press and hold Both buttons for 2 seconds to revert to Surface Mode.

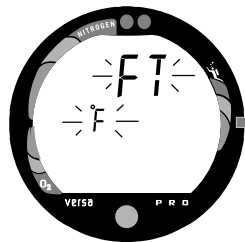


Fig. 24- Set Units of Measure

• • • • •
• **To return to Sur-**
• **face Mode at any**
• **time while in Set**
• **Mode, press and**
• **hold Both buttons**
• **for 2 seconds.**
• • • • •

TO SET - HOUR FORMAT (while in the Surface Mode)
Factory set for 12 Hr (12: Am to 11: Pm), the Format can also be set for 24 Hr (0: to 23: hours).

- Press Both buttons simultaneously, release when SET: 2 appears.
- Press and release the Advance (Front) button, the Units screen appears with the set point flashing.
- Press the Advance (Front) button **1 more time.**
- The graphic **Hour** appears with **12** (or 24) flashing (Fig. 25).
- Press and release the Select (Side) button to toggle between 12 and 24.
- Press the Advance (Front) button to accept the setting and advance to Set Hour, or press and hold Both buttons for 2 seconds to revert to Surface Mode.



Fig. 25 - Set Hour Format

TO SET - TIME (while in the Surface Mode)

Set for factory local time, the Time can be set to values between 1:00 and 12:59 (Am/Pm) or 0:00 and 23:59.

- Press Both buttons simultaneously, release when SET: 2 appears.
- Press and release the Advance (Front) button, the Units screen appears with the set point flashing.
- Press the Advance (Front) button **2 more times**.
- Time appears with the **Hour** value flashing (Fig. 26).
- Press and release the Select (Side) button to advance the Hour value in increments of one hour.
- Press the Advance (Front) button to accept the setting.
- The **Minute** value flashes (Fig. 27).
- Press and release the Select (Side) button to advance the Minute value in increments of one minute.
- Press the Advance (Front) button to accept the setting and advance to Set Year.

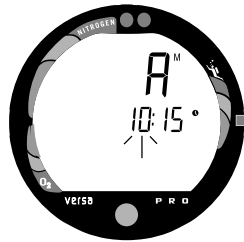


Fig. 26 - Set Hour

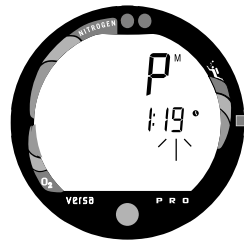


Fig. 27 - Set Minute



Fig. 28 - Set Year



Fig. 29 - Set Month



Fig. 30 - Set Day

TO SET - DATE (after setting Time)

Factory set for the factory local Date, the Date can be set to values between 01/01/01 and 12/31/20.

- After having set and accepted the Time, the Date appears with the graphic **dAY**, and **Year** value flashing (Fig. 28).
- Press and release the Select (Side) button to advance the Year value in increments of one year.
- Press the Advance (Front) button to accept the setting.
- The **Month** value flashes (Fig. 29).
- Press and release the Select (Side) button to advance the Month value in increments of one month.
- Press the Advance (Front) button to accept the setting.
- The **Day** value flashes (Fig. 30).
- Press and release the Select (Side) button to advance the Day value in increments of one day.
- Press the Advance (Front) button to accept the setting.

TO SET - AUDIBLE ALARM (while in the Surface Mode)
Factory set for ON, the Alarm can be also be set to OFF. This setting also applies to the LED Warning Indicator that is synchronized with the Audible Alarm.

When set OFF, the Alarm will not sound during the conditions described on page 14.

- Press Both buttons simultaneously, release when SET: 2 appears.
- Press and release the Advance (Front) button, the Units screen appears with the set point flashing.
- Press the Advance (Front) button **7 more times.**
- The graphic **ALM** and Alarm (speaker) icon appear with **ON** (or OFF) flashing (Fig. 31).
- Press the Select (Side) button to toggle between ON and OFF.
- Press the Advance (Front) button to accept the setting and advance to Set Max TLBG Alarm, or press and hold Both buttons for 2 seconds to revert to Surface Mode.



Fig. 31- Set Audible Alarm

TO SET - MAXIMUM TISSUE LOADING BAR GRAPH (TLBG) ALARM (while in the Surface Mode)

Factory set for DECO (all 8 segments), the Maximum Tissue Loading Bar Graph (TLBG) Alarm can be set to values between DECO (all 8 segments) and 1 segment.

- Press Both buttons simultaneously, release when SET: 2 appears.
- Press and release the Advance (Front) button, the Units screen appears with the set point flashing.
- Press the Advance (Front) button 8 more times.
- The graphic **ndc** and Alarm (speaker) icon appear with the full **TLBG** flashing (Fig. 32).
- Press and release the Select (Side) button to decrease the number of segments one at a time.
- Press the Advance (Front) button to accept the setting and advance to Set Dive Time Remaining Alarm, or press and hold Both buttons for 2 seconds to revert to Surface Mode.

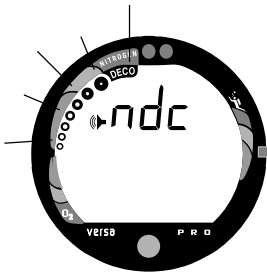


Fig. 32 - Set Max TLBG Alarm

TO SET - DIVE TIME REMAINING ALARM

(while in the Surface Mode)

Factory set for 0:00 (minutes), the Dive Time Remaining Alarm can be set to values between 0:00 and 0:20 (minutes) in increments of 1 minute.

- Press Both buttons simultaneously, release when SET: 2 appears.
- Press and release the Advance (Front) button, the Units screen appears with the set point flashing.
- Press the Advance (Front) button 9 more times.
- The graphic **dtr**, and Alarm (speaker) and Dive Mode icons appear with the **Dive Time Remaining** value flashing (Fig. 33).
- Press and release the Select (Side) button to advance the Alarm value in increments of one minute.
- Press the Advance (Front) button to accept the setting and advance to Set Max PO2 Alarm, or press and hold Both buttons for 2 seconds to revert to Surface Mode.



Fig. 33 - Set Dive Time Remaining Alarm

TO SET - MAXIMUM PO2 ALARM

(while in the Surface Mode)

Factory set for 1.60 (ATA), the Maximum PO2 Alarm can be set to values between 1.20 and 1.60 (ATA) in increments of .10 (ATA).

- Press Both buttons simultaneously, release when SET: 2 appears.
- Press and release the Advance (Front) button, the Units screen appears with the set point flashing.
- Press the Advance (Front) button **10 more times.**
- The graphics **PO2** and MAX, and Alarm (speaker) icon appear with the **PO2** value flashing (Fig. 34).
- Press and hold the Select (Side) button to advance the Alarm value in increments of .10 (ATA).
- Press the Advance (Front) button to accept the setting and advance to Set FO2 50% Default, or press and hold Both buttons for 2 seconds to revert to Surface Mode.



Fig. 34 - Set Max PO2 Alarm

TO SET - FO2 50% DEFAULT

(while in the Surface Mode)

Factory set ON, the FO2 50% Default feature can be set to OFF. The effects of this feature being ON or OFF are described on page 17.

- Press Both buttons simultaneously, release when SET: 2 appears.
- Press and release the Advance (Front) button, the Units screen appears with the set point flashing.
- Press the Advance (Front) button 11 more times.
- The graphics **FO2** and **50** appear with **ON** (or OFF) flashing (Fig. 35).
- Press and release the Select (Side) button to toggle between ON and OFF.
- Press the Advance (Front) button to accept the setting and advance to Set Backlight Duration, or press and hold Both buttons for 2 seconds to revert to Surface Mode.



Fig. 35 - Set FO2 50% Default

TO SET - BACKLIGHT DURATION

(while in the Surface Mode)

Factory set for 7 (seconds), the Backlight Duration can be set to values of 0, 3, or 7 (seconds).

- Press Both buttons simultaneously, release when SET: 2 appears.
- Press and release the Advance (Front) button, the Units screen appears with the set point flashing.
- Press the Advance (Front) button **12 more times.**
- The graphic **GLO** and Time icon appear with the **Duration** value flashing (Fig. 36).
- Press and release the Select (Side) button to advance the Duration from :00 to :03 to :07 (seconds).
- Press the Advance (Front) button to accept the setting and advance to Set Sampling Rate, or press and hold Both buttons for 2 seconds to revert to Surface Mode.



Fig. 36 - Set Backlight Duration

TO SET - PC SAMPLING RATE

(while in the Surface Mode)

Factory set for 30 (seconds), the Sampling Rate can be set to values of 2, 15, 30, or 60 seconds, or 2, 5, or 10 feet (.5, 1.5, or 3 meters).

- Press Both buttons simultaneously, release when SET: 2 appears.
- Press and release the Advance (Front) button, the Units screen appears with the set point flashing.
- Press the Advance (Front) button **13 more times.**
- The graphics **SR** and **SECS** appear with the **Sampling Rate** value flashing (Fig. 37).
- Press and release the Select (Side) button advance the Rate one selection at a time.
- Press the Advance (Front) button to accept the setting and advance to Set Digital Gauge Mode, or press and hold Both buttons for 2 seconds to revert to Surface Mode.



NOTE:

- **Sampling Rate is the interval at which data samples are recorded during a dive for subsequent download to the PC program. This setting has no effect on displayed data or data in the unit's viewable Log.**



Fig. 37 - Set Sampling Rate



NOTE:

- Once a dive is made with this feature set ON, the setting will be locked ON for 24 hours after the dive.
- Set Digital Gauge Mode will not appear as a selection during that 24 hour period.

TO SET - USER SET DIGITAL GAUGE MODE

(while in the Surface Mode)

• Factory set OFF, Digital Gauge Mode can also be set ON. The effects of this feature being ON or OFF are described on page 58.

- Press Both buttons simultaneously, release when SET: 2 appears.
- Press and release the Advance (Front) button, the Units screen appears with the set point flashing.
- Press the Advance (Front) button 14 more times.
- The graphic **GAU** appears with **OFF** (or ON) flashing (Fig. 38).
- Press and release the Select (Side) button to toggle between ON and OFF.
- Press the Advance (Front) button to accept the setting and advance to Set Water Activation, or press and hold Both buttons for 2 seconds to revert to Surface Mode.



Fig. 38 - Set Digital Gauge Mode

TO SET - WATER ACTIVATION

(while in the Surface Mode)

Factory set for ON, the Water Activation feature can also be set for OFF (disabled) to prevent inadvertent activation during travel or storage. When set ON, the Versa Pro will automatically Activate and enter Dive Mode upon immersion in water.

- Press Both buttons simultaneously, release when SET: 2 appears.
- Press and release the Advance (Front) button, the Units screen appears with the set point flashing.
- Press the Advance (Front) button 15 more times (14 more times after a dive in Digital Gauge Mode).
- The graphics **ACT** and **H2O** appear with **ON** (or OFF) flashing (Fig. 39).
- Press and release the Select (Side) button to toggle between ON and OFF.
- Press the Advance (Front) button to accept the setting and revert to Surface Mode.


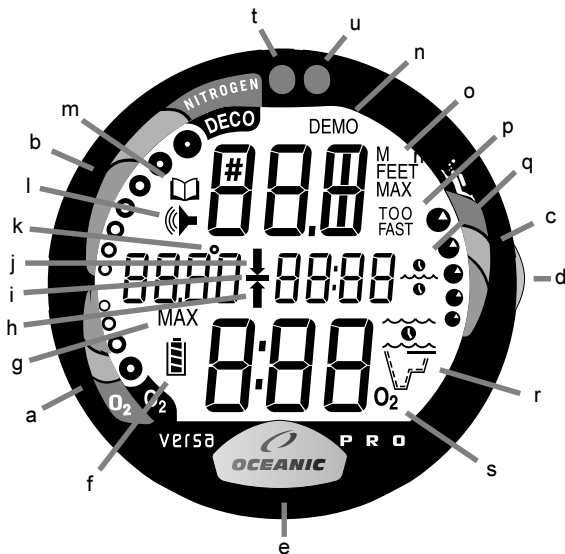
 **WARNING:** If this feature is set for OFF, the Versa Pro must be manually activated prior to commencing a dive.



Fig. 39 - Set Water Activation

Components:

- a. O2 (oxygen) Bar Graph
- b. Tissue Loading Bar Graph
- c. Variable Ascent Rate Indicator
- d. Select (side) Button
- e. Advance (front) Button
- f. Battery Indicator
- g. Graphic - Maximum Depth
- h. Icon - Ascend Arrow
- i. Icon - Decompression Ceiling
- j. Icon - Descend Arrow
- k. Icon - Temperature
- l. Icon - Alarm
- m. Icon - Log Mode
- n. Graphic - Demo Mode
- o. Graphic - Depth
- p. Graphic - Ascent Too Fast
- q. Icon - Time
- r. Icon - Operating Mode
- s. Icon - O2 (oxygen)
- t. LED Warning Light
- u. Smartglo Sensing Port



LCD DISPLAY



WARNING: Prior to diving with the Versa Pro, you must also read and understand the Oceanic Dive Computer Safety and Reference Manual which provides Important Warnings and Safety Recommendations as well as general product information.

PLAN and DIVE MODES

PRE DIVE PLANNING SEQUENCE™

Oceanic strongly recommends that you review the Pre Dive Planning Sequence (PDPS) prior to every dive to help you plan your dive as required to avoid exceeding no decompression or oxygen exposure limits.

Depth <u>feet(meters)</u>	NDL <u>hours:mins</u>
30 (9)	4:20 (4:43)
40 (12)	2:17 (2:24)
50 (15)	1:21 (1:25)
60 (18)	:57 (:59)
70 (21)	:40 (:41)
80 (24)	:30 (:32)
90 (27)	:24 (:25)
100 (30)	:19 (:20)
110 (33)	:16 (:17)
120 (36)	:13 (:14)
130 (39)	:11 (:11)
140 (42)	:09 (:09)
150 (45)	:08 (:08)
160 (48)	:07 (:07)
170 (51)	:07 (:06)
180 (54)	:06 (:06)
190 (57)	:05 (:05)

No Decompression Limits
for an Air Dive
(no dive made yet)

This is especially important for repetitive dives when the PDPS indicates adjusted dive times that are available for the next dive, based on residual nitrogen or oxygen accumulation (whichever is in control) following the last dive and surface interval.

The PDPS provides a sequence of theoretical dive times available for depths ranging from 30 feet (9 meters) to 190 feet (57 meters) in 10 foot (3 meter) increments.

During the sequence, no decompression times are only displayed for depths where there is at least 1 minute of theoretical dive time available at the depth, taking into account a descent rate of 60 feet (18 meters) per minute.

To access the Pre Dive Planning Sequence

(while in the Surface mode) -

- Press the Advance (Front) button 1 time
 - Press and release the Select (Side) button to advance through the depths/times, one screen at a time.
 - Press the Advance (Front) button to access Fly Mode.
 - The unit will revert to Surface Mode after 2 minutes if no button is pressed.
-
- With each depth displayed by the Pre Dive Planning Sequence, you will see either predicted no decompression limits (NDLs) based upon your previous dive profiles (if calculated to be nitrogen controlled), or predicted oxygen tolerance limits (OTLs) based upon either a single dive exposure or your 24 hour accumulation of oxygen (if calculated to be oxygen controlled).
 - The Maximum Depth allowed for PO₂ of 1.6 (ATA) for the FO₂ setting will also be displayed.
 - Depths greater than the maximum depth that can be achieved with a PO₂ of 1.60 ATA will not be displayed.
 - If the Tissue Loading Bar Graph is displayed (Fig. 40), that next dive is calculated to be controlled by nitrogen loading.
 - If the O₂BG and O₂ symbol are displayed (Fig. 41), it is calculated to be controlled by oxygen loading.



Fig. 40 - Nitrogen Control



Fig. 41 - Oxygen Control

△ NOTE: The Versa Pro will store oxygen accumulation calculations for up to 10 dives conducted during a 24 hour period. If the maximum limit for oxygen loading has been exceeded for that day (24 hour period), all of the segments of the O2 bar graph will be displayed flashing .

Depth/Time values will not appear until the O2 bar graph recedes into the green (normal) zone (i.e., your daily oxygen dosage decreases an amount equivalent to the amount accumulated during the latest dive completed).

TISSUE LOADING BAR GRAPH (Fig. 42a)

As your Depth and Elapsed Dive Time increase, the Tissue Loading Bar Graph (TLBG) will add segments (green toward red) to represent the absorption of nitrogen.

While ascending to shallower depths, the number of segments displayed will begin to recede, offering a graphic representation of your multilevel diving capability.

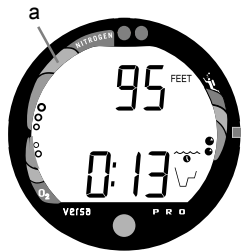


Fig. 42 - Tissue Loading Bar Graph

OXYGEN ACCUMULATION BAR GRAPH (Fig. 43a)

If FO₂ was set for a numerical value (nitrox), the Oxygen Accumulation (O₂) Bar Graph will add segments (green toward red) to represent oxygen accumulation for that dive, or 24 hour period, whichever amount is greater.

VARIABLE ASCENT RATE INDICATOR (Fig. 44a)

The Variable Ascent Rate Indicator (VARI) shows how fast you are ascending. When you exceed the maximum recommended ascent rate for the depth you are at (see below), it will enter the red (Too Fast) zone and you will be alerted by the graphic **TOO FAST**, all segments of the bar graph flashing, an Audible alarm and the red LED Warning Indicator (unless set OFF). The warnings will stop when your ascent rate is slowed.

- At depths greater than 60 feet (18 meters), maximum recommended rate is 60 feet/minute (18 meters/minute).
- At depths of 60 feet (18 meters) and shallower, maximum recommended rate is 30 feet/minute (9 meters/minute).



NOTE: Refer to page 10 for additional information pertaining to the Variable Ascent Rate Indicator.

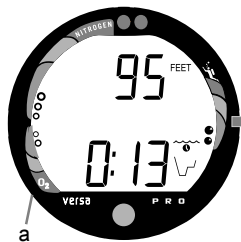


Fig. 43 - O₂ Bar Graph

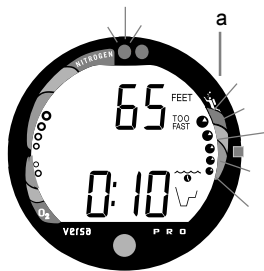


Fig. 44 - Ascent Alarm

CONTROL OF DISPLAYS

During No Decompression conditions, various displays of information (up to 4) are available. Each provides Depth, Dive Time Remaining, and additional information. The intent of this feature is to provide the diver control of how much information is on display at any given time during the dive. The diver can change from one display to another as often as desired by pressing the Advance (Front) button, otherwise it does not change.

During conditions in which cautionary type information is displayed (e.g., Decompression, High PO₂, etc.), there is a Main Display of important information relevant to the specific condition. The diver can access another display, but it will automatically revert to the Main Display after 3 seconds.

To activate the Backlight, during a dive press the Select (Side) button.

- The displays will be illuminated as long as the button is depressed, plus it will remain illuminated for the Backlight Duration time that has been set (0, 3, or 7 seconds).
- The Backlight will not activate during a Low Battery condition.

NO DECOMPRESSION DIVE MODE

The Versa Pro will enter the No Decompression Dive Mode when you descend deeper than 4 feet (1.2 meters).

No Decompression Dive Mode - Display #1 (Fig. 45)

Information includes Current Depth, Dive Time Remaining (and Mode icon), and the applicable bar graphs.

- Press and release the Advance (Front) button to view Display #2.

No Decompression Dive Mode - Display #2 (Fig. 46)

Information includes Current Depth, Maximum Depth for that dive (and icon), Elapsed Dive Time (and icon), Dive Time Remaining (and Mode icon), and the applicable bar graphs.

- Press and release the Advance (Front) button again to view Display #3.

No Decompression Dive Mode - Display #3 (Fig. 47)

Information includes Current Depth, Temperature, Time of Day, Dive Time Remaining (and Mode icon), and the applicable bar graphs.

- Press and release the Advance (Front) button again to view Display #4 (only if FO2 is set for a numerical value - Nitrox), or revert to Display #1 (if FO2 is set for Air).



Fig. 45 - No Deco #1



Fig. 46 - No Deco #2



Fig. 47 - No Deco #3



Fig. 48 - No Deco #4

No Decompression Dive Mode - Display #4 (Fig. 48)

Information includes - Current Depth, current value of PO₂ (if a nitrox dive) and PO₂ graphic, Dive Time Remaining (and Mode icon), and applicable bar graphs.

- press the Advance (Front) button to view Display #1.

DECOMPRESSION DIVE MODE

The Versa Pro is designed to help you by providing a representation of how close you are to entering decompression. Decompression Dive Mode (Fig. 49) activates when theoretical No Decompression time/depth limits are exceeded.

Upon entering Decompression Mode, the Audible Alarm will sound and the red LED Warning Indicator (and icon) will flash for 30 seconds (unless set OFF), or until acknowledged.

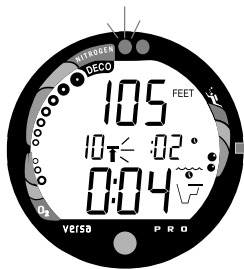


Fig. 49 - Entry into Deco Mode

- Press and hold the Advance (Front) button for 2 seconds to acknowledge/silence the Audible Alarm (unless set OFF).
- The UP Arrow and Deco Bar will flash if you are greater than 10 feet (3 m) deeper than the Required Stop Depth.
- Once you are within 10 feet (3 m) of, and below, the Stop Depth, both Arrows and the Bar appear solid.

Total Ascent Time

Total Ascent Time (Fig. 50a) includes Stop Times required at all required decompression ceilings and vertical Ascent Time calculated at 60 feet (18 meters) per minute for depths deeper than 60 feet (18 meters), and 30 feet (9 meters) per minute for depths of 60 feet (18 meters) and shallower.

Managing Decompression Stops

To fulfill your decompression obligation, you should make a safe controlled ascent to a depth slightly deeper than, or equal to, the Required Ceiling Stop Depth indicated (Fig. 50b) and decompress for the Stop Time indicated (Fig. 50c).

The amount of decompression credit time that you receive is dependent on depth, with slightly less credit given the deeper you are. You should stay slightly deeper (Fig. 50d) than the Required Stop Depth indicated until the next shallower Stop Depth appears. Then, you can slowly ascend to, but not shallower than that indicated ceiling Stop Depth.

- While in Decompression Mode, the Versa Pro will automatically revert to the Main Display after 3 seconds unless the Advance (Front) button is pressed to view another display of information.

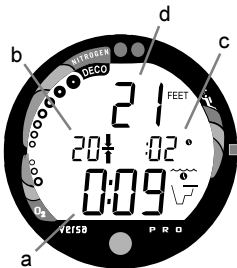


Fig. 50 - Deco Stop



Fig. 51 - Deco #1

Decompression Dive Mode - Main Display #1 (Fig. 51)

Information includes - Current Depth, required Ceiling Stop Depth and Time, Total Ascent Time (and Mode icon), both Arrows and the Deco Bar, and the applicable bar graphs.

- Press and release the Advance (Front) button to view Display #2.



Fig. 52 - Deco #2

Decompression Dive Mode - Display #2 (Fig. 52)

Information includes - Current Depth, Maximum Depth for that dive (and icon), Elapsed Dive Time (and icon), Total Ascent Time (and Mode icon), both Arrows and the Deco Bar, and the applicable bar graphs.

- Press and release the Advance (Front) button again to view Display #3.



Fig. 53 - Deco #3

Decompression Dive Mode - Display #3 (Fig. 53)

Information includes - Current Depth, Temperature, Time of Day (and icon), Total Ascent Time, both Arrows and the Deco Bar, and the applicable bar graphs.

- Press and release the Advance (Front) button again to view - Display #4 (only if FO2 is set for a numerical value - Nitrox), or revert to Display #1 (if FO2 is set for Air).

Decompression Dive Mode - Display #4 (Fig. 54)

Information includes - Current Depth, the current value of PO₂ (if a nitrox dive) and PO₂ graphic, Total Ascent Time, Mode icon, both Arrows and the Deco Bar, and applicable bar graphs.

- Press the Advance (Front) button to view Display #1.

VIOLATION MODES

While in Violation Modes the Alternate Displays previously described can be accessed using the Advance (Front) button, and the Backlight can be activated using the Select (Side) button.

- The Versa Pro will automatically revert to the Main Display after 3 seconds unless the Advance (Front) button is pressed to view another display of information.



NOTE: Upon entry into Violation Modes, the Audible Alarm will emit a 30 second continuous tone followed by a 5 second steady beep. The Alarm will sound even if it is user Set OFF. It also cannot be turned off (acknowledged) by pressing the Advance (Front) button.



Fig. 54 - Deco #4

Conditional Violation Mode

If you ascend shallower (Fig. 55a) than a Required Decompression Ceiling Stop Depth displayed (Fig. 55b), the Down Arrow, Deco Bar, and Total Ascent Time will flash until you descend below the Required Stop Depth. Also displayed will be Current Depth and applicable bar graphs.

Unless set OFF (a user setting), the Audible Alarm will emit a continuous tone for 30 seconds or until acknowledged by pressing the Advance (Front) button.

If you descend below the required decompression ceiling before 5 minutes have elapsed, the Versa Pro will continue to function in Decompression Dive Mode. In this case, no off-gassing credit will be given, and for each minute above the ceiling $1\frac{1}{2}$ minutes of **Penalty Time** will be added to Required Stop Time.

The added Penalty (decompression) Time will have to be 'worked off' first, before obtaining off-gassing credit. Once the Penalty Time is worked-off, and off-gassing credit begins, required decompression Stop Depths and Time will decrease toward zero, then the Tissue Loading Bar Graph will recede into the yellow Caution Zone and the Versa Pro will revert to the No Decompression Dive Mode.

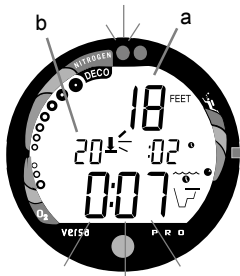


Fig. 55 - Conditional Violation

△ NOTE: Upon entry into Delayed Violation Modes, the red LED warning light will light and the Audible Alarm will sound, even if it is user Set OFF. It cannot be turned off (acknowledged) by pressing the Advance (Front) button.

Delayed Violation Mode #1 (Fig. 56)

If you remain above the Required Ceiling Stop Depth for 'more than 5 minutes', the Tissue Loading Bar Graph and Total Ascent Time will flash until you descend below the Required Stop Depth. This is a continuation of a Conditional Violation.

Delayed Violation Mode #2 (Fig. 57)

The Versa Pro cannot calculate decompression times for Stop Depths much greater than 60 feet (18 meters) and offers no indication of how much time spent underwater would result in the need for a greater Stop Depth.

If your Decompression obligation requires a Ceiling Stop Depth 'between' 60 feet (18 meters) and 70 feet (21 meters), the Tissue Loading Bar Graph will flash. Total Ascent Time will still be displayed.

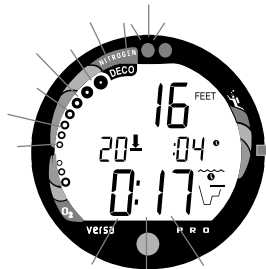


Fig. 56 - Delayed Violation #1

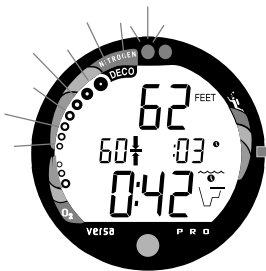


Fig. 57 - Delayed Violation #2

You must ascend to just deeper than, and stay as close as possible to, 60 feet (18 meters) without causing the Total Ascent Time display to flash. When the Required Stop Depth indicates 50 FT/ 15 M, etc., you can ascend to those depths and continue decompressing.

Delayed Violation Mode #3 (Fig. 58)

If you descend deeper than 330 feet (99.9 meters), the Tissue Loading Bar Graph segments will flash, and the Current Depth and Max Depth displays will only indicate 3 dashes (---).

Upon ascending above 330 feet (99.9 meters), the Current Depth display will be restored, however Max Depth will only display 3 dashes for the remainder of that dive. The Log for that dive will display 3 dashes as the Max Depth achieved.

Immediate Violation Mode and Gauge Mode

During a Dive, if a ceiling much greater than 60 feet (18 meters) is required, an **Immediate Violation Mode** will be entered. This situation would be preceded by entering Delayed Violation Mode #2. The Versa Pro would then operate with limited functions in **Gauge Mode** during the remainder of that dive and for 24 hours after surfacing.



Fig. 58 - Delayed Violation #3

Gauge Mode turns the Versa Pro into a digital instrument without any decompression or oxygen monitoring functions. Only Current Depth, Max Depth, Elapsed Dive Time, and the Variable Ascent Rate Indicator will be displayed (Fig. 59). The Tissue Loading Bar Graph and O₂ Bar Graph will both flash as a warning of this condition.

- Press the Advance (Front) button to view Temperature and Time of Day.
- Press the Select (Side) button to activate the Backlight.

The Versa Pro will also enter an **Immediate Violation Mode** 5 minutes after reaching the surface from a dive in which a Delayed Violation occurred.

On the surface, **Gauge Mode** displays the Dive Number, Temperature, Time of Day, and Surface Interval (Fig. 60). It does not provide the FO₂, PDPS, or Time to Fly and Desaturate features. The countdown timer that appears when you try to access Time to Fly does not represent 'Time to Fly'. It is only provided to inform you of the time remaining before normal Versa Pro operation can resume with full features and functions.

This condition is a Permanent Violation, and in the event that a dive is made during the 24 hour period, a full 24 hour surface interval must then be served before all functions are restored.

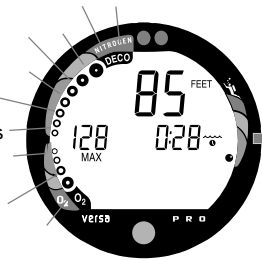


Fig. 59 - Immediate Violation Gauge Mode (underwater)



Fig. 60 - Immediate Violation Gauge Mode (after surfacing)



Fig. 61 - PO2 Warning

HIGH PO2 DIVE MODE

When partial pressure of oxygen (PO₂) becomes equal to, or greater than, **1.40 ATA, or 0.2 ATA less than the PO₂ Alarm set point (a user setting)**; the red LED warning will flash, the Audible Alarm will sound (unless set OFF), and the current PO₂ value, PO₂ symbol, O₂ segment of the O₂ Bar Graph, and UP Arrow will appear on the Main Display as a warning until PO₂ decreases. Current Depth and Dive Time Remaining will also be displayed (Fig. 61).

If PO₂ continues to increase, the value displayed will increase toward a maximum value of 5.00 ATA in increments of .01 ATA. When it reaches a value of **1.60 ATA, or the PO₂ Alarm set point (a user setting)**, the Audible Alarm will sound (unless set OFF) and the current PO₂ value, PO₂ symbol, O₂ segment of the O₂ Bar Graph, and UP Arrow will flash as a warning until PO₂ decreases (Fig. 62).



Fig. 62 - PO2 Alarm

- Press the Advance (Front) button to view the Alternate Displays.
- The unit will revert to the Main Display after 3 seconds.
- Press the Select (Side) button to activate the Backlight.

HIGH OXYGEN ACCUMULATION

The O2 Bar Graph displays either oxygen accumulated during that nitrox dive, or during the repetitive nitrox dives you conduct during that 24 hour period, whichever of the two is greater at that time.

The yellow **Caution Zone** of the O2 Bar Graph offers you a convenient way to consistently monitor how close you are coming to the limits of oxygen exposure. **Use it as a visual reference to place a wider margin of protection between you and the Limits.**

If the theoretical amount of oxygen accumulated equals, or exceeds, the limit for a single exposure, or the exposure limit for a 24 hour period, Oxygen Dive Time Remaining becomes zero (0:00) and the O2 Bar Graph will enter the red **O2 (Danger) Zone** (Fig. 63). The red LED warning will flash, the Audible Alarm will sound (unless set OFF), and the UP Arrow and the full O2 Bar Graph will flash as a warning until the level of oxygen decreases below the limit.

- Press the Advance (Front) button to view the Alternate Displays.
- The unit will revert to the Main Display after 3 seconds.
- Press the Select (Side) button to activate the Backlight.

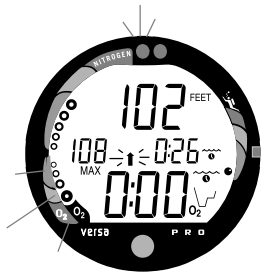


Fig. 63 - High O2

USER SET DIGITAL GAUGE MODE

When Digital Gauge Mode is set for ON, the Versa Pro will operate as a Digital Depth Gauge/Timer without performing nitrogen and oxygen calculations (Fig. 64).

While in this mode, the range of the Current and Maximum Depth displays are extended to 399 feet (120 meters) to accommodate activities involving diving with advanced breathing gas mixtures or free diving beyond the normal depth limit of the unit. Time of Day and Elapsed Dive Time will also be displayed.

UNEXPECTED LOSS OF DISPLAYED INFORMATION

If your Versa Pro stops working for any reason, it is important that you have anticipated this possibility and are prepared for it. **This is an important reason for not pushing the no decompression and oxygen accumulation limits, and a critical reason to avoid entering decompression.**

If you dive in situations where your trip would be ruined or your safety would be jeopardized by losing the use of your Versa Pro, a backup instrument system is highly recommended.



Fig. 64 - User Set Gauge Mode



WARNING: Prior to diving with the Versa Pro, you must also read and understand the Oceanic Dive Computer Safety and Reference Manual which provides Important Warnings and Safety Recommendations as well as general product information.

POST DIVE MODES

POST DIVE SURFACE MODE

When you ascend to 3 feet (1 meter) or shallower, the Versa Pro will enter Surface Mode and begin counting your surface interval.

TRANSITION PERIOD

The first 10 minutes is, in affect, a Transition Period during which time the following information is displayed (Fig. 65):

- Number of that dive (during that day)
- Temperature (ambient)
- Time of Day and icon
- Battery Consumption Indicator
- Surface Interval time (colon flashing) and icon (flashing)
- Tissue Loading Bar Graph indicating current nitrogen loading
- O₂ Bar Graph indicating current oxygen accumulation (if nitrox)
- During the Transition Period, Log Mode can be accessed. No other modes (e.g., PDPS, Fly, Desat, Set, PC) are accessible.
- Press the Select (Side) button to activate the Backlight.



Fig. 65 - Transition Period

To view that dive's Log (Fig. 66) -

Refer to page 64 for a description of the Log Mode displays.

- Press the Advance (Front) button **1 time**.
- Press the Select (Side) button **1 time** to view the Nitrogen data screen.
- Press the Select (Side) button **again** to view the Oxygen data screen (if a nitrox dive).
- Press Both buttons simultaneously for 2 seconds to return to Surface Mode.
- The unit will revert to Surface Mode after 2 minutes if no button is pressed.

Log Data will not be stored in the unit's memory until the 10 minute Transition Period on the surface is completed.

Once 10 minutes have elapsed, the Surface Mode icon and Surface Interval time display colon stop flashing indicating that the Dive and Transition Period are completed, and a subsequent descent will be considered a new dive.

If you descend during the 10 minute Transition Period, time underwater will be considered a continuation of that dive. The time at the surface (if less than 10 minutes) will not be added as Dive Time.



Fig. 66 - Log Mode
(during Transition Period)



Fig. 67 - Surface Mode (>10 min)

AFTER THE TRANSITION PERIOD (THE FIRST 2 HOURS)

For the remainder of the **first 2 hours after surfacing**, information will continue to be displayed as Surface Mode (Fig. 67) and you will have full access to other modes (e.g., PDPS, Fly, Desat, Log, Set, etc.).

To activate the Backlight -

- Press the Select (Side) button.

To access the Pre Dive Planning Sequence -

(Also refer to page 42)

- Press the Advance (Front) button **1 time** (while in Surface Mode).
- Press and release the Select (Side) button to advance through the sequence of available 'adjusted' depths and times one screen at a time.
- The unit will revert to Surface Mode after 2 minutes, unless the Advance (Front) button is pressed to access the Fly Mode.



Fig. 68 - Adjusted NDLS

The Pre Dive Planning Sequence now shows **adjusted** No Decompression Limits (Fig. 68) based on residual nitrogen and accumulated oxygen calculated to be remaining from the previous dives.

To access the Time to Fly Countdown (while in Surface Mode)

- Press the Advance (Front) button **2 times**.
- The Time to Fly counter (Fig. 69) begins counting down 10 minutes after surfacing from a dive (after the Transition Period) displaying the word 'FLY' and a countdown that begins at 23:50 (hr:min) and counts down to 0:00 (hr:min).
- If a violation occurred during the dive a single dash (-) will appear instead of the letters FLY.
- The unit will revert to Surface Mode after 2 minutes, unless the Advance (Front) button is pressed to access the Desat Time Countdown.



Fig. 69 - Time to Fly

To access the Time to Desaturate Countdown

(while in Surface Mode)

- Press the Advance (Front) button **3 times**.
- The unit will revert to Surface Mode after 2 minutes, unless the Advance (Front) button is pressed to access the Log Mode.
- If a violation occurred during the dive, Desaturation Time will not be displayed.

The Time to Desaturate counter (Fig. 70) provides calculated time for tissue desaturation at sea level. The countdown starts 10 minutes after surfacing at 23:50 (hr:min) maximum and counts down to 0:00 (hr:min).



Fig. 70 - Time to Desaturate

LOG MODE

Information from your latest 24 dives is stored in the **Log** for viewing. The first dive of a new day (after midnight) will be #1, then #2, etc. After 24 dives are accumulated, each subsequent dive will overwrite the oldest dive in the Log (i.e., the most recent dive deletes the oldest). Log information will not be lost when the battery is removed, but factory service will delete data.

Dives are displayed in a reverse sequence that starts with the dive most recently recorded back to the oldest of the 24 dives stored. Thus, your most recent dive will always be the first shown in the sequence. Each dive has three log screens - Date/Time started, Nitrogen data, and Oxygen data (not displayed if the dive included a Violation). Dives are identified by the Date/Time started and 'number' that day.

Button Control in Log Mode -

- The Advance (Front) button is used to access a specific dive's Log.
- HINT: To bypass a dive's Log and search for another in the sequence, press the Advance (Front) button repeatedly. Do not press the Select (Side) button until you find the dive Log you wish to view.
- The Select (Side) button is used to view the second and third screens (Nitrogen and Oxygen related data) for that dive.
- To return to Surface Mode at any time while in Log Mode, press Both buttons simultaneously for 2 seconds.
- The unit will automatically revert to Surface Mode after 2 minutes if no button is pressed while in the Log Mode.

To access the Log Mode and view the First Screen

(While in Surface Mode) -

- Press the Advance (Front) button **4 times**.
- The First Screen of the most recent dive will appear displaying (Fig. 71) -
 - The Log Mode icon
 - Dive Number
 - Time/ Date the dive started

To view the Second Screen of the Log (Nitrogen data) -

- Press the Select (Side) button **1 time** (while viewing the Time/Date). Displayed will be (Fig. 72) -
- Log Mode icon
- Maximum Depth - reached during the dive (and icon)
- Temperature - minimum during the dive (and icon)
- Surface Interval - prior to that dive (and icon)
- Elapsed Dive Time (and icon)
- Variable Ascent Rate Indicator - showing the maximum ascent rate maintained for 4 consecutive seconds during the dive
- Tissue Loading Bar Graph - showing tissue nitrogen loading at the time you surfaced at the end of the dive. Also, the segment that reflects the maximum loading will appear flashing.



Fig. 71 - Log (Date / Time)



Fig. 72 - Log (Nitrogen Data)



Fig. 73 - Log (Oxygen Data)

To view the Third Screen of the Log (Oxygen data)

- Press the Select (Side) button **1 time** (while viewing the Nitrogen data). Displayed will be (Fig. 73)-
- Log Mode icon
- FO2 graphic and value set for that dive
- Maximum PO2 level reached during that dive and PO2 graphic
- O2 Bar Graph - showing oxygen loading at the end of the dive

To access the first screen of the previous dive's Log

- Press the Advance (Front) button **1 time**.

AFTER THE FIRST 2 HOURS

Two hours after the last dive, Surface Mode will no longer be displayed, the Time to Fly and Desaturation countdowns will be displayed alternately for 3 seconds each until they count down to 0:00 or another dive is made.



Fig. 74 - Surface Mode

To access other modes or enter settings -

- Press Either button to return to Surface Mode (Fig. 74).
- The unit will again revert to the Time to Fly and Desaturation countdowns after 2 hours, if no button is pressed.

WET CONTACTS

If the graphic **H2O** appears during the Fly Mode (Fig. 75) and Desaturation Mode (Fig. 76) countdowns that alternate 2 hours after a dive, it is an indication that the water activation contacts are bridged (still wet) and the unit must be rinsed in fresh water and thoroughly dried.

- Once the unit is dry, the graphic **H2O** will disappear from the display.
- If the unit is not cleaned and dried prior to the countdowns reaching 0:00 (hr:min), or making another dive, it will shut off then automatically reactivate.
- The graphic H2O would then appear in place of Dive Number when Surface Mode is displayed during the Surface Mode.
- If no dive is made, the unit would shut off after 2 hours, then automatically reactivate again, repeating the action until cleaned and dried.



Fig. 75 - Fly Mode
(Activation Contacts Wet)



Fig. 76 - Desaturation Mode
(activation contacts wet)

DOWNLOADING DATA TO A PC

Using special linking hardware, dive data can be downloaded (copied) from your Versa Pro to an IBM compatible PC program running on a Windows® operating system. Compatibility requirements and instructions are provided with the optional download package that is available from your Authorized Oceanic Dealer. The software program provides dive tabular and graphic profile data sampled throughout the dives at the interval you set.

△ NOTE: Ensure that the download product that you acquire is compatible with the Versa Pro and the PC equipment that you will be using.

The Interface Cable will be connected to the Data Port located on the side of the Versa Pro housing.

Prior to attempting to download data from your Versa Pro, refer to the instructions provided in the User Manual that is incorporated into the CD for the download package.

Refer to page 26 of this manual for instructions regarding access to PC Interface (Fig. 77).



Fig. 77 - PC Interface



WARNING: Prior to diving with the Versa Pro, you must also read and understand the Oceanic Dive Computer Safety and Reference Manual which provides Important Warnings and Safety Recommendations as well as general product information.

SIMULATOR (DEMO) MODE



Fig. 78 - Simulator Mode

SIMULATOR MODE

This mode provides you with the ability to practice various dive mode scenarios and computer functions while observing the various displays.

- The SmartGlo Backlight functions as it normally does.
- At any time while in Simulator Mode, pressing and holding both buttons simultaneously for 2 seconds shall revert operation to real Surface Mode.
- The set points entered into the Versa Pro do not affect the operation of the Simulator which has its own settings that allow Digital Gauge Mode to be set ON or OFF, calculations to be cleared, and FO2 to be set.

Access and Setup (while in Surface Mode)

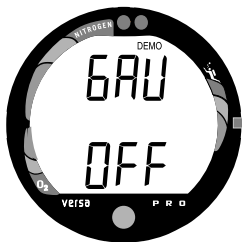


Fig. 79 - Set Demo Gauge

- Press and hold Both buttons for 6 seconds.
- Release the buttons during the 2 second window when **DEMO** and **SIM** appear (Fig. 78).
- Press and release the Advance (Front) button to access SIM MODE. The graphics **DEMO** and **GAU** will appear with **OFF** (or ON) flashing (Fig. 79).
- When set ON, the SIMULATOR will operate as the unit would in User Set Digital Gauge Mode only displaying Depth and Elapsed Dive Time. When set OFF, it operates as it would as an Air or Nitrox computer.

- Press and release the Select (Side) button to toggle between ON and OFF.
- Press and release the Advance (Front) button to accept the setting and advance to DEMO: NI-O2 with CUR or (NEW) flashing (Fig. 80).
- When set for NEW, calculations are based on zero residual nitrogen and oxygen loading (a clean dive). When set for CUR, calculations take into consideration any residual nitrogen and oxygen remaining from previous 'actual' dives. Subsequent (repetitive) Simulated dives do not take into consideration previous Simulated dives.
- Press and release the Select (Side) button to toggle between NEW and CUR.
- Press and release the Advance (Front) button to accept the setting and advance to Demo Surface Mode with the DEMO icon flashing (Fig. 81).
- Press and release the Advance (Front) button to advance to DEMO: FO2 with Air (or a numerical value) flashing (Fig. 82).
- Press and release the Select (Side) button to advance the FO2 setting from AIR to 21 through 50, in increments of 1%. Max Depth for PO2 of 1.60 will be displayed.
- Press and release the Advance (Front) button to accept the setting and revert to Demo Surface Mode with the DEMO icon flashing.



Fig. 80 - Set Demo Calibration



Fig. 81 - Demo Surface Mode

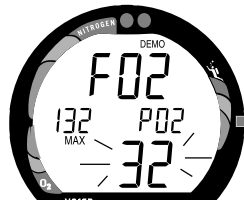


Fig. 82 - Set Demo FO2



Fig. 83 - Simulated Descent

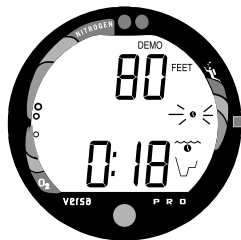


Fig. 84 - Time Acceleration

Descending

- Press/hold the Select (Side) button for 2 seconds to access Dive Mode. The DOWN Arrow will appear flashing (Fig. 83).

Hint: Quick taps (<2 seconds) of the Select (Side) button starts/stops descents and quick taps of the Advance (Front) button accesses the Alternate Displays.

- While the Down Arrow is flashing, press and release the Select (Side) button to begin a Descent at a rate of 5 feet (1.5 meters) per real time second.
- Press and release the Select (Side) button during the Descent to stop the descent.
- During the descent, pressing and releasing the Advance (Front) button provides access to the Alternate Displays.
- Press/hold the Select (Side) button for 4 seconds to access Time Acceleration. The small clock icon shall begin flashing (Fig. 84).
- Press and release the Select (Side) button to increase Elapsed Dive Time 1 minute per real time second.
- Press and release the Select (Side) button during Time Acceleration will restore normal time rate of 1 second per second.
- Pressing and holding both buttons simultaneously for 2 seconds will revert operation to real Surface Mode.

Ascending

Rate of Ascent can be set for 1 or 3 feet per second (fps) prior to start of Ascent or while stopped.

- Press/hold the Advance (Front) button for 2 seconds to access an Ascent Rate of 1 fps. The UP Arrow will appear flashing (Fig. 85).
- To change the Rate to 3 fps, press/hold Advance (Front) for 2 seconds. The graphic TOO FAST appears and the alarm will sound and red LED will flash (Fig. 86).
- Press/hold the Advance (Front) button to return the Rate to 1 fps.
- Press and release the Advance (Front) button while the Arrow is flashing to start the Ascent at the selected rate.
- Press and release the Advance (Front) button during the Ascent to stop the Ascent.
- Press and release the Advance (Front) button while the Ascent is stopped to access Alternate Displays.
- Press/hold the Advance (Front) button for 2 seconds while the Ascent is stopped to restart the Ascent.
- Pressing and holding both buttons simultaneously for 2 seconds will revert operation to real Surface Mode.

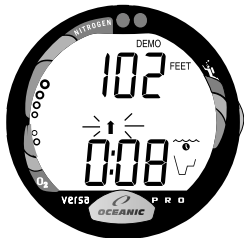


Fig. 85 - Simulated Ascent

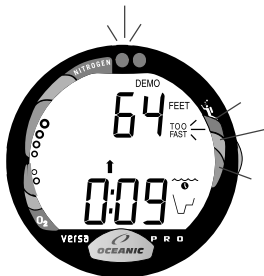


Fig. 86 - Ascent Rate Acceleration

Surfacing from a Simulated Dive

- The Simulator will enter Demo Surface Mode (Fig. 87) upon ascending to 3 feet (1 m) or shallower.
- Press and hold the Select (Side) button for 4 seconds to access Time Acceleration. The small Time clock icon will begin flashing.
- Press and release the Select (Side) button to increase Surface Interval Time 1 minute per real time second.
- Press and release the Select (Side) button during the Time Acceleration to restore the normal time rate of 1 second per second.
- FO2 can be set after a Surface Interval of 10 minutes. Press and release the Advance (Front) button to access FO2 Set Mode. The FO2 graphic and value previously set will appear with the value flashing.
- Press and release the Select (Side) button to increase the FO2 value in increments of 1%.
- Press and release the Advance (Front) button to accept the setting and return to Demo Surface Mode.
- To make another dive, press/hold the Select (Side) button for 2 seconds to access Dive Mode for a repetitive dive. The DOWN Arrow will appear flashing.
- Pressing and holding both buttons simultaneously for 2 seconds will revert operation to real Surface Mode.



Fig. 87 -Demo Surface Mode



WARNING: Prior to diving with the Versa Pro, you must also read and understand the Oceanic Dive Computer Safety and Reference Manual which provides Important Warnings and Safety Recommendations as well as general product information.

GENERAL

CARE AND CLEANING

Protect your Versa Pro from shock, excessive temperatures, chemical attack, and tampering. Protect the lens against scratches with a transparent Instrument Lens Protector. Small scratches will naturally disappear underwater.

- Soak and rinse the Versa Pro in fresh water at the end of each day of diving, and check to ensure that the areas around the low pressure (depth) sensor (Fig. 88a), download interface port, and buttons are free of debris or obstructions.
- To dissolve salt crystals, use lukewarm water or a slightly acidic white vinegar/water bath. After removal from the bath, place the unit under gently running water and towel dry before storing.
- Transport your unit cool, dry, and protected.

INSPECTIONS AND SERVICE

Your Versa Pro should be **inspected annually** by an Authorized Oceanic Dealer who will perform a factory prescribed function check and inspection for damage or wear. To keep the 2 year limited warranty in effect, this inspection must be completed one year after purchase (+/- 30 days). Oceanic recommends that you continue to have this inspection performed every year to ensure it is working properly. The costs of annual inspections are not covered under the terms of the 2 year limited warranty.



Fig. 88 - Depth Sensor

To Obtain Service

Take your Versa Pro to an Authorized Oceanic Dealer or send it to the nearest Oceanic Regional Distributor Facility.

To return your Versa Pro to Oceanic:

- Record all dive data in the Log and/or download the data in memory. All data will be erased when it receives factory service.
- Package it using a protective cushioning material.
- Include a legible note stating specific reason for return, your name, address, daytime phone number, serial number, and a copy of your original sales receipt and Warranty Registration Card.
- Send freight prepaid and insured using a traceable method to the nearest Oceanic Regional Service Facility (see page 90), or to Oceanic USA.
- If shipping to Oceanic USA, obtain an RA (Return Authorization) number by contacting Oceanic at 510/562-0500 or send an e-mail to service@oceanicusa.com.
- Non-warranty service must be prepaid. COD is not accepted.
- Additional information is available at the Oceanic web site OceanicWorldWide.com



△ NOTE: The procedures that follow must be closely adhered to. Damage due to improper battery replacement is not covered by the unit's 2 year warranty.

BATTERY REPLACEMENT

The battery compartment should only be opened in a dry and clean environment with extreme care taken to prevent the entrance of moisture or dust.

As an additional precautionary measure to prevent formation of moisture in the battery compartment, it is recommended that the battery be changed in an environment equivalent to the local outdoor temperature and humidity (e.g., do not change the battery in an air conditioned environment then take it outside during a hot sunny day).

Inspect the Button, Lens, and Housing to ensure they are not cracked or damaged. If there is any sign of moisture in the module, **DO NOT** use the Versa Pro until it receives proper service by an Authorized Oceanic Dealer, or the Oceanic factory.



Hot Swap

If the new battery can be inserted within 10 seconds after the old one is removed (Hot Swap), settings and nitrogen and oxygen calculations for repetitive dives will be retained.

Battery Hatch Removal

- Locate the Battery Compartment on the back of the unit.
- While applying steady inward pressure on the clear Battery Hatch, rotate the Hatch Ring clockwise 10 degrees by pressing on the upper/right arm of the Ring with a small blade screwdriver (Fig. 89).

NOTE: If available, an adjustable face spanner tool or a pair of pointed pliers can be used instead of the screwdriver by inserting the tips of the tool in the small holes in the Ring (Fig. 90).

- Lift the Hatch Ring up and away from the Housing.
- Remove the clear Battery Hatch.

Battery Removal

- Remove the Retaining Bar located across the lower portion of the Battery (Fig. 91 a).
- Remove the Hatch O-ring. DO NOT use tools
- Using care not to damage the Battery Contacts (Fig. 91 b/c), slide the Battery up and out of the right side of the Battery Compartment.

NOTE: DO NOT allow a metal object to short circuit the top of the Battery which is positive (+) to the negative (-) contact of the Battery Compartment.



Fig. 89 - Ring Removal



Fig. 90 -Ring Removal
(alternate)

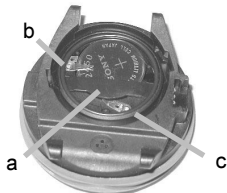


Fig. 91 - Battery Compartment

Inspection

- Closely check all of the sealing surfaces for any signs of damage that might impair proper sealing.
- Inspect the Buttons, Lens, and Housing to ensure they are not cracked or damaged.
- If it is necessary to clean the Battery Compartment, flush the it and all components with a solution of 50% white vinegar and 50% fresh water. Rinse with fresh water, and allow to dry overnight, or blow dry with a hair dryer (set at 'no heat').



WARNING: If damage, moisture, or corrosion is found, it is recommended that you return your Versa Pro to an Authorized Oceanic Dealer, and **DO NOT** attempt to use it until it has received factory prescribed service.

Battery Installation

- Slide a new 3 volt type CR2450 Lithium Battery, negative (-) side down into the Battery Cavity. Slide it in from the right side and ensure that it slides under the contact clip on the left rim of the cavity.
- Orient the Retaining Bar across the lower portion of the Battery and carefully push it down into position (Fig. 92).



Fig. 92 - Battery Installation

Battery Hatch and Hatch Ring Installation

- Replace the Hatch O-ring with a new one. This O-ring must be a genuine Oceanic part that can be purchased from an Authorized Oceanic Dealer. Use of any other O-ring will void the warranty.
- Lightly lubricate the **new** Hatch O-ring with silicone grease and place it on the inner rim of the Battery Hatch. Ensure that it is evenly seated.
- Slide the Hatch Ring, top portion first (small opening), onto your thumb (Fig. 93).
- Carefully place the clear Battery Hatch (with O-ring) into position on the rim of the Battery Compartment, then press it evenly and completely down into place with your same thumb.
- Maintain the Battery Hatch securely in place and, using your other hand, slide the Hatch Ring down off your thumb and into position around the Battery Compartment. The tabs on the Ring fit down into the slots located at the 2 and 9 o'clock positions (Fig. 94).
- Using your fingers, turn the Ring counter clockwise 5 degrees until the tabs engage, then tighten it 5 more degrees by turning it counter clockwise with the aide of a small blade screwdriver, pressing against the upper/left arm of the Ring (Fig. 95).



Fig. 93 -Hatch Installation

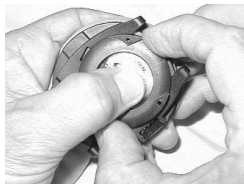


Fig. 94 - Orientation of Hatch Ring



Fig. 95 - Ring Installation

△ NOTE: If available, an adjustable face spanner tool or pair of pointed pliers can be used by placing the tips in the small holes of the Ring (Fig. 96).

Inspection

- Activate the unit and watch carefully as it performs a full diagnostic and battery check, and enters Surface Mode. Observe the LCD display to ensure it is consistently clear and sharp in contrast throughout the screen.

△ WARNING: If there are any portions of the display missing or appearing dim, or if a Low Battery condition is indicated, return your Versa Pro to an Authorized Oceanic Dealer for a complete evaluation before attempting to use it.



Fig. 96 - Ring Installation
(alternate)

SPECIFICATIONS

CAN BE USED AS

- Air Computer
- Nitrox Computer
- Digital Depth Gauge/Timer

NO DECOMPRESSION MODEL

Basis:

- Modified Haldanean Algorithm
- 12 tissue compartments

Data Base:

- Diving Science and Technology (DSAT) - Rogers/Powell

Performance:

- Tissue compartment halftimes (mins.) Spencer's "M" values
5, 10, 20, 40, 80, 120, 160, 200, 240, 320, 400, 480
- Reciprocal subsurface elimination
- 60 minute surface credit control for compartments faster than 60 minutes
- Tissue compartments tracked up to 24 hours after last dive

Decompression Capabilities:

- Decompression stop ceilings at 10, 20, 30, 40, 50, & 60 ft
(3, 6, 9, 12, 15, & 18 m)

Altitude Algorithm:

- Based on NOAA tables

Oxygen Exposure Limits:

- Based on NOAA tables

OPERATIONAL MODES

- Activation/Diagnostic
- Surface

- Pre Dive Planning Sequence (30 - 190 ft / 9 - 57 m)
- Time to Fly Countdown
- Desaturation Countdown
- Dive Log (Date / Time, Nitrogen, & Oxygen)

- Set Mode 1:
 - FO2 (21 - 50 %)
 - Max Depth Alarm (30 - 300 ft /10-99 m)
 - Elapsed Dive Time Alarm (0:10 - 3:00 hr:min)
 - PC Interface (to Download data)

- Set Mode 2:
 - Units of Measure (Imperial / Metric)
 - Hour Format (12 / 24)
 - Time (Hour, Minute)
 - Date (Year, Month, Day)
 - Audible Alarm / LED Warning (On/Off)
 - Max TLBG Alarm (1 - 8 segments)
 - Dive Time Remaining Alarm (0:00 - 0:20 min)
 - Max PO2 Alarm (1.20 - 1.60 ATA)
 - FO2 50% Default (On/Off)
 - Backlight Duration (0 / 3 / 7 sec)
 - Sampling Rate (2/15/30/60 sec, 2/5/10 ft, .5/1.5/3 m)
 - Digital Gauge Mode (On / Off)
 - Water Activation (On / Off)

- Simulator Mode

SPECIFICATIONS (CONTINUED)

OPERATIONAL MODES (continued)

- No Decompression Dive:
 - #1 (Current Depth, Dive Time Remaining, Bar Graphs)
 - #2 (Current Depth, Dive Time Remaining, Max Depth, Elapsed Dive Time, Bar Graphs)
 - #3 (Current Depth, Dive Time Remaining, Temperature, Time of Day, Bar Graphs)
 - #4 -if nitrox dive (Current Depth, Dive Time Remaining, Current PO₂, Bar Graphs)
- Decompression Dive:
 - #1 - Default (Current Depth, Stop Depth / Time, Total Ascent Time, Bar Graphs)
 - #2 (Current Depth, Stop Depth / Time, Total Ascent Time, Max Depth, Elapsed Dive Time, Bar Graphs)
 - #3 (Current Depth, Temperature, Time of Day, Total Ascent Time, Bar Graphs)
 - #4 - if nitrox dive (Current Depth, Current PO₂, Total Ascent Time, Bar Graphs)
- Violation (Conditional, Delayed, & Immediate/Gauge)
- High PO₂ (1.20 - 1.60 ATA)
- High Oxygen Accumulation (per dive / 24 hr)

DISPLAY RANGE/RESOLUTION

Numeric Displays:

	<u>Range:</u>	<u>Resolution:</u>
• Dive Number	0 - 24	1
• Depth	0 - 399 ft (0 - 120 m)	1 ft (.1 m / 1 m > 99.9 m)
• Maximum Depth	399 ft (120 m)	1 ft (.1 m / 1 m > 99.9 m)
• FO ₂ Set Point	Air, 21 - 50 %	1 %
• PO ₂ Value	0.00 - 5.00 ATA	.01 ATA
• Dive Time Remaining	0:00 - 9:59 hr:min	1 minute
• Total Ascent Time	0:00 - 9:59 hr:min	1 minute
• Decompression Stop Time	0:00 - 9:59 hr:min	1 minute
• Elapsed Dive Time	0:00 - 9:59 hr:min	1 minute
• Surface Time	0:00 - 23:59 hr:min	1 minute
• Dive Log Surface Interval	0:00 - 25:59 hr:min	1 minute

SPECIFICATIONS (CONTINUED)

DISPLAY RANGE/RESOLUTION (continued)

Numeric Displays:

	<u>Range:</u>	<u>Resolution:</u>
• Time to Fly	23:50 - 0:00 hr:min* (* starting 10 min after the dive)	1 minute
• Time to Desaturate	23:50 - 0:00 hr:min* (* starting 10 min. after the dive)	1 minute
• Temperature	0 to 99°F (-9 to 60°C)	1°

Special Displays:

	<u>Occurrence</u>
• Diagnostic Display	After Manual Activation
• Out of Range (- - -)	>330 feet (>99.9 meters)
• Gauge Mode Countdown Timer	23:50 to 0:00 hr:min (after violation)

BAR GRAPHS

Tissue Loading Bar Graph

	<u>segments</u>	Oxygen (O2) Bar Graph:	<u>segments</u>
• No Decompression zone (green)	5	• Normal zone (green)	3
• No Deco Caution zone (yellow)	2	• Caution zone (yellow)	1
• Decompression Warning zone (red)	1	• Danger zone (red)	1

Variable Ascent Rate Indicator: 60 feet (18 m) & Shallower

	<u>segments</u>	<u>feet/min</u>	<u>meters/min</u>
	0	0 - 10	0 - 3
• Normal Zone (Green)	1	11 - 15	3.5 - 4.5
• Normal Zone (Green)	2	16 - 20	5 - 6
• Normal Zone (Green)	3	21 - 25	6.5 - 7.5
• Caution Zone (Yellow)	4	26 - 30	8 - 9
• Too Fast Zone (Red - flashing)	5	> 30	> 9

Deeper than 60 feet (18 m)

	<u>segments</u>	<u>feet/min</u>	<u>meters/min</u>
	0	0 - 20	0 - 6
	1	21 - 30	6.5 - 9
	2	31 - 40	9.5 - 12
	3	41 - 50	12.5 - 15
	4	51 - 60	15.5 - 18
	5	> 60	> 18

SPECIFICATIONS (CONTINUED)

OPERATIONAL PERFORMANCE

Function:	<u>Accuracy:</u>
• Depth	±1% of full scale
• Timers	1 second per day

Dive Counter:

- Displays Dives #1 to 24, 0 if no dive made yet
- Resets to Dive #1, upon diving (after midnight - new 'date')

Dive Log Mode:

- Stores 24 most recent dives in memory for viewing
- After 24 dives, adds 25th dive in memory and deletes the first dive

Altitude:

- Operational from sea level to 14,000 feet (4,267 meters) elevation
- Compensates for altitude only if manually activated at that altitude (no compensation if activated by immersion in water)
- Recalibration of depth readings from 'feet of sea water' to 'feet of fresh water' when manually activated at elevations greater higher than 2,000 feet (610 meters) elevation

Power:

- | | |
|-------------------|---|
| • Battery | 1 - 3 vdc, type CR2450 Lithium battery |
| • Shelf life | Up to 5 years |
| • Replacement | User replaceable (annual recommended) |
| • Life expectancy | 100 dive hours (if 1 - 1 hour dive per dive day) to over
300 dive hours (if 3 - 1 hour dives per dive day) |

Battery Consumption Indicator:	<u>segments displayed</u>	<u>estimated power remaining</u>
	4 (inside)	75 to 100%
	3 (inside)	50 to 75%
	2 (inside)	25 to 50%
	1 (inside)	< 25%

SPECIFICATIONS (CONTINUED)

OPERATIONAL PERFORMANCE (continued)

Activation:

- Manual - push button (recommended)
- Automatic - by immersion in water (as a backup if set ON)
- H2O graphic indicates Wet Contacts are bridged (unit must be dried prior to transport or storage)
- Cannot be manually activated deeper than 4 feet (1.2 m), if the Water Activation feature is set OFF.
- Cannot be activated at elevations higher than 14,000 feet (4,267 m)

Shutoff:

- Automatically shuts off if no dive is made within 120 minutes after initial activation. Reactivation required.
- Automatically shuts off 24 hours after last dive (will reactivate if the H2O graphic is displayed).
- Cannot be shut off manually.

Setting FO2:

- Automatically set for 'Air' upon activation
- Remains set for Air unless an FO2 numerical value is set
- Nitrox set points from 21 to 50 %
- If set for 21%, remains set for 21% until changed
- If set for >21%, it reverts to 50% 10 minutes after the dive, if the FO2 Default is ON. If the FO2 Default is OFF, the value will remain at the value set.

Operating Temperature:

- The Versa Pro will operate in almost any **temperature diving environment** in the world, between 32 °F and 140 °F (0 and 60 °C). At extremely low temperatures, the LCD may become sluggish, but this will not affect its accuracy. If stored or transported in extremely low temperature areas (below freezing), you should warm the module and its battery with body heat before diving.

ACCESSORIES (optional items available from your Authorized Oceanic Dealer):

- Lens Protector (computer module) - adheres to lens face, prevents scratches
- PC download package (hardware and software)
- Battery Kit - includes 1 battery, 1 battery hatch o-ring, silicone grease

OCEANIC WORLD WIDE

OCEANIC USA
2002 Davis Street
San Leandro, CA 94577
Tel: 510/562-0500
Fax: 510/569-5404

Web site: <http://www.OceanicWorldWide.com>

Oceanic Germany - Nurnberg, Germany
Tel: 49-911-324-6630 Fax: 49-911-312-999
E-mail: office@oceanic.de

Oceanic South Europe - Genova, Italy
Tel: 0039-010-834-51 Fax: 0039-010-834-52-50
E-mail: Shawne.Stanley@oceanicse.it

Oceanic SW, Ltd - Devon, United Kingdom
Tel: 44-1-404-89-1819 Fax: 44-1-404-89-1909
E-mail: info@oceanicuk.com

Oceanic France - Marseille, France
Tel: 33-491-25-27-45 Fax: 33-491-25-35-86
E-mail: oceanicfrance@wanadoo.fr

Oceanic International (Pacific) - Kapolei,
Hawaii
Tel: 808-682-5488 Fax: 808-682-1068
E-mail: oceanichi@oceanicusa.com

Oceanic Diving Australia Pty. Ltd
Sorrento, Victoria, Australia
Tel: 61-3-5984-4770 Fax: 61-3-5984-4307
E-mail: sales@oceanicaus.com.au

Oceanic Asia-Pacific Pte. Ltd - Singapore
Tel: 65-779-3853 Fax: 65-779-3945
E-mail: info@oceanicasia.com.sg

Oceanic Japan - Yokohama, Japan
Tel: 045-575-6671 Fax: 045-575-6673
E-mail: oceanic@gol.com

SERVICE RECORD

Serial Number _____

Date of purchase _____

Purchased from _____



Below to be filled in by an Authorized Oceanic Dealer:

Date	Service Performed	Dealer / Technician

NOTES

RESET FEATURE

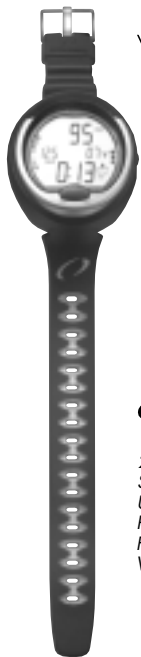
This dive computer is configured with a RESET feature that allows data to be cleared, including Nitrogen and Oxygen calculations, FO2 set point, Log Mode entries, and Download data.



WARNING: Reset after a dive and subsequent use for a repetitive dive conducted by the same diver could result in serious injury to or death.

RESET PROCEDURE

- While in SURFACE MODE (new activation period or greater than a 10 minute post dive surface interval), press the Advance (Front) button one (1) time to access PLAN MODE.
- While 30 feet (or 9 meters) is displayed in the PLAN MODE, press and hold Both buttons until SET 2 appears, then release the buttons.
- Press and release the Advance (Front) button to display the Clear screen. The first 2 digits (**00**) of the KEY CODE flash.
- Press and release the Select (Side) button to increase the digits to **01**.
- Press and release the Advance (Front) button again to display the second 2 digits (**00**) of the KEY CODE, flashing.
- Press and release the Select (Side) button to increase the digits to **01**.
- Press and release the Advance (Front) button to complete the RESET operation and turn the unit OFF.



versa **PRO**

OCEANIC worldwide

*2002 Davis Street
San Leandro, CA 94577
USA*

Phone: 510/562-0500

Fax: 510/569-5404

Web: <http://www.OceanicWorldWide.com>

Doc.no.12-2283-r03 (6/13/02)

